

Evidence Over Ideology: Why Data Driven Drug Policy Produces Better Outcomes



Why Evidence Matters:^{1,2}

Evidence matters when addressing drug policy as it directly affects...

- Public Health and Safety
- Government Spending
- Individual Rights

The magnitude of these issues shows how high the stakes are and why decisions on policy must be grounded on research rather than politics, fear, or ideology.



What the Evidence Shows:^{1,2}

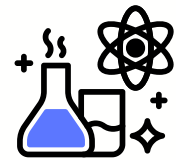
Evidence-based prevention, treatment, and recovery strategies produce better health outcomes than policies shaped by moral framing or punitive ideology.



Public health improves when drug policy is guided by data, evaluation, and long-term population health indicators, rather than short-term political goals.



Countries that prioritize science over rhetoric demonstrate lower drug-related mortality, reduced transmission of infectious diseases, and higher recovery success rates.



Successful Data Driven Drug Policy Examples:^{3,4,5}

Mandated Prescription Drug Monitoring Programs (PDMPs)



- These are state run databases that track prescriptions for controlled substances to collect data from pharmacies so that healthcare providers can see a patient's controlled substance history.
- They help identify potentially harmful combinations of pills, monitor trends, prevent misuse, and allow for providers to guide their patients towards treatment.

Overall, the evidence showed that states that used mandated PDMPs showed reduced risky opioid prescribing behaviors.

Hawaii's Opportunity Probation with Enforcement (HOPE)



- HOPE is a probation program that has principles of swift, certain, and proportionate sanctions. Participants receive clear rules, frequent random drug screenings, and short-term sanctions (a few days) for violations.
- The goal is to make consequences predictable and quick rather than severe but delayed.

Overall, the evidence showed the program has been associated with greater compliance and reduced probation violations among participants compared to traditional probation.

Important Policy Implications:

- Drug policy should be continuously evaluated using measurable outcomes, not ideological benchmarks.
- Prevention, treatment, and recovery strategies must be flexible and responsive to data, especially as substance use patterns evolve.
- Long-term population health outcomes should be the primary metric of success.



References:

1. National Academies of Sciences, Engineering, and Medicine. (2017). Pain Management and the Opioid Epidemic: Balancing Societal and Individual Benefits and Risks of Prescription Opioid Use. Washington, DC: The National Academies Press. doi: 10.17226/24781.
2. Chao, K., Sarker, M. N. I., Ali, I., Firdaus, R. B. R., Azman, A., & Shaed, M. M. (2023). Big data-driven public health policy making: Potential for the healthcare industry. *Heliyon*, 9(9), e19681. <https://doi.org/10.1016/j.heliyon.2023.e19681>
3. Strickler, G. K., Zhang, K., Halpin, J. F., Bohnert, A. S. B., Baldwin, G. T., & Kreiner, P. W. (2019). Effects of mandatory prescription drug monitoring program (PDMP) use laws on prescriber registration and use and on risky prescribing. *Drug and alcohol dependence*, 199, 1-9. <https://doi.org/10.1016/j.drugalcdep.2019.02.010>
4. Centers for Disease Control and Prevention. (2024). Prescription Drug Monitoring Programs (pdmps). Centers for Disease Control and Prevention. <https://www.cdc.gov/overdose-prevention/hcp/clinical-guidance/prescription-drug-monitoring-programs.html>
5. Hawaii State Judiciary. (2016). State of the art of HOPE probation (Report). Honolulu, HI: Hawaii State Courts. https://www.courts.state.hi.us/docs/news_and_reports_docs/State_of_%20the_Art_of_HOPE_Probation.pdf