

April 16<sup>th</sup> 2018

Dockets Management Staff (HFA-305)  
Food and Drug Administration  
5630 Fishers Lane, Rm. 1061  
Rockville, MD 20852

Re: Department of Health and Human Services, Food and Drug Administration [Docket No. FDA-2018-N-1072]: International Drug Scheduling; Convention on Psychotropic Substances; Single Convention on Narcotic Drugs; Cannabis Plant and Resin; Extracts and Tinctures of Cannabis; Delta-9-Tetrahydrocannabinol; Stereoisomers of Tetrahydrocannabinol; Cannabidiol; **Request for Comments** (FR Doc. 2018-07225).

Re: *Re-Scheduling of Cannabinoids in USA*  
- *Tetrahydrocannabinol and Cannabidiol Related*  
*Arteriopathy, Genotoxicity and Teratogenesis*

I am very concerned about the potential for increased cannabis availability in USA implied by full drug legalization; however, a comprehensive and authoritative submission of the evidence would take weeks and months to prepare. Knowing what we know now and indeed, what has been available in the scientific literature for a growing number of years concerning a myriad of harmful effects of marijuana, marijuana containing THC should not be reclassified. These effects that are now well documented in the scientific literature include, alarmingly, harm involving reproductive function and birth anomalies as a result of exposure to or use of marijuana with THC.

In addition to all of the usual concerns which you will have heard from many sources including the following I have further particular concerns:

- 1) Effect on developing brains <sup>1-15</sup>
- 2) Effect on driving <sup>16-26</sup>
- 3) Effect as a Gateway drug to other drug use including the opioid epidemic <sup>27-30</sup>
- 4) Effect on developmental trajectory and failure to attain normal adult goals (stable relationship, work, education) <sup>17,31-43</sup>
- 5) Effect on IQ and IQ regression <sup>13,44-48</sup>
- 6) Effect to increase numerous psychiatric and psychological disorders <sup>49-62</sup>
- 7) Effect on respiratory system <sup>63-85</sup>
- 8) Effect on reproductive system <sup>7,86-91</sup>
- 9) Effect in relation to immunity and immunosuppression <sup>92-108</sup>
- 10) Effect of now very concentrated forms of cannabis, THC and CBD which are widely available <sup>109,110</sup>
- 11) Outdated epidemiological studies which apply only to the era before cannabis became so potent and so concentrated <sup>110</sup>.

These issues are all well covered by a rich recent literature including reviews from such major international authorities as Dr Nora Volkow Director of NIDA at NIH <sup>1,3,5,110-112</sup>, Professor Wayne Hall <sup>113-117</sup> and others <sup>118</sup>.

### **Cannabinoid Therapeutics**

In my view the therapeutic effects of cannabinoids have been wildly inflated by the press.

Moreover, with over 1,000 studies listed for cannabinoids on [clinicaltrials.gov](http://clinicaltrials.gov), the chance of a type I experimental error, or studies being falsely reported to be positive when in fact they are not, is at least 25/1,000 at the 0.05 level.

THC as dronabinol is actually a failed drug from USA which has such a high incidence of side effects that it was rarely used as superior agents are readily available for virtually all of its touted and alleged therapeutic applications. My American liaisons advise that dronabinol sales have climbed in recent times as patients use it as a ruse to avoid detection of cannabinoid use at work in states where it is not yet legal. So when I call it a failed therapeutic I mean in a traditional sense, not in the novel way it is now applied for flagrantly flouting the law.

In considering the alleged benefits of cannabis one has to be particularly mindful of cannabis addiction in which cannabinoids will alleviate the effect of drug withdrawal as they do in any other addiction. Moreover, the fact that cannabis itself is known to cause both pain and nausea, greatly complicates the interpretation of many studies.

I also have the following concerns which relate in sum to **the arteriopathy and vasculopathy and the genotoxicity of cannabis, tetrahydrocannabinol and likely including cannabidiol and various other cannabinoids:**

### **Cannabinoid Arteriopathy**

12) Cannabis is now known to have an important arteriopathic effect and cardiovascular toxic effect <sup>5,110,119-183</sup>. Particularly noteworthy amongst these various reports are two reports by Dr Nora Volkow in 2014, the Director of the National Institute of Drug Abuse at NIH to the New England Journal of Medicine which together document the adverse cardiovascular and cerebrovascular effects of cannabis at the epidemiological level <sup>5,110</sup>; a report from our own clinic in 2016 documenting the effect of cannabis to increase cardiovascular aging to BMJ Open <sup>183</sup>; a series of reports showing a fivefold increase in the rate of heart attack within one hour after cannabis smoking <sup>121-123</sup>; several reports of cannabis related arteritis <sup>162,163,168,170,171</sup>; other reports of the cerebrovascular actions of cannabis <sup>184-187</sup>; documentation that cannabis exposure increases arterial stiffness and cardiovascular and organismal aging <sup>183</sup>; and a recent report showing that human endothelial vascular function – vasodilation - is substantially inhibited within just *one minute* of cannabis exposure <sup>188</sup>.

13) It is also relevant that a synthetic cannabinoid was recently shown to directly induce both thromboxane synthase and lipoxygenase, and so be directly vasoconstrictive, prothrombotic and proinflammatory <sup>189</sup>.

14) Vascular aging, including both macrovascular and microvascular aging is a major pathological feature not only because most adults in western nations die from

myocardial infarction or cerebrovascular accidents, but also because local blood flow and microvascular function is a key determinant of stem cell niche activity in many stem cell beds. This has given rise to the vascular theory of aging which has been produced by some of the leading researchers at the National Health Lung and Blood Institute at NIH, amongst many others<sup>190-192</sup>. It can thus be said not only that “You are as old as your (macrovascular) arteries”, but also that “you are as old as your (microvascular) stem cells.” Hence the now compelling evidence for the little known arteriopathic complications of cannabis and cannabinoids, carry very far reaching implications indeed. This was confirmed directly in the clinical study of arterial stiffness from my clinic mentioned above<sup>119</sup>.

- 15) Whilst aging, myocardial infarction and cerebrovascular accidents are all highly significant outcomes and major public health endpoints, these effects assume added significance in the context of congenital anomalies. Some congenital defects, such as gastroschisis, are thought to be due to a failure of vascular supply of part of the anterior abdominal wall<sup>193-198</sup>. Hence in one recent study the unadjusted odds ratio of having a gastroschisis pregnancy amongst cannabis users (O.R.=8.03, 95%C.I. 5.63-11.46) was almost as high as that for heroin, cocaine and amphetamine users (O.R.= 9.35, 95%C.I. 6.64-13.15), and the adjusted odds ratio for any illicit drug use (of which was 84% cannabis) was O.R.=3.54 (95%C.I. 2.22-5.63)<sup>199</sup> and for cannabis alone was said by these Canadian authors to be O.R.=3.0<sup>200</sup>. Hence cannabis related vasculopathy - arteriopathy beyond its very serious implications in adults also carries implications for paediatric and congenital disorders and may also constitute a major teratogenic mechanism.

### **Cannabinoid Genotoxicity and Teratogenesis**

- 16) Cannabis is associated with 11 cancers (lung, throat, bladder, airways, testes, prostate, cervix, larynx) including<sup>201,202</sup>;
- 17) Four congenital and thus inherited cancers (rhabdomyosarcoma, neuroblastoma, ALL, AML and AMML)<sup>201,202</sup>;
- 18) Sativex product insert in many nations carries standard warning against its use by males or females who might be having a baby<sup>203</sup>.
- 19) Cannabis – and likely also CBD – is known to be associated with epigenetic changes<sup>30</sup> some of which are believed to be inheritable for at least four generations<sup>204</sup>;
- 20) Cannabis is known to interfere with tubulin synthesis<sup>205-209</sup> and binding and it also acts via Stathmin so that microtubule function is impeded<sup>210</sup>. This leads directly to micronucleus formation<sup>113,211,212</sup>. Cannabis has been known to test positive in the micronucleus assay for over fifty years<sup>113,117,211</sup>. This is a major and standard test for genotoxicity. Micronucleus formation is known to lead directly to major chromosomal toxicity including chromosomal shattering – so-called chromothripsis – and is known to be associated with cell death, cancerogenesis and major foetal abnormalities<sup>202,213-215</sup>.

- 21) Cannabis has also been linked definitively with congenital heart disease is a statement by the American Heart Association and the American Academy of Pediatrics in 2007<sup>216</sup>, on the basis of just three epidemiological studies, all done in the days before cannabis became so concentrated. Congenital heart defects have also been linked with the father's cannabis use<sup>217</sup>. Indeed, one study showed that paternal cannabis use was the strongest risk factor of all for preventable congenital cardiac defects<sup>218</sup>.
- 22) Cannabis has also been linked with gastroschisis in at least *seven cohort and case control studies*<sup>199,219-224</sup> some of which are summarized in a Canadian Government Report<sup>200</sup>. In that report the geographic incidence of most major congenital anomalies closely paralleled the use of cannabis as described in other major Canadian reports<sup>225</sup>. The overall adjusted odds ratio for cannabis induction of gastroschisis was quoted by these authors as 3.0<sup>200</sup>.
- 23) Moreover, outbreaks of both congenital heart disease<sup>226</sup> and gastroschisis in North Carolina also paralleled the local use of cannabis in that state as described by Department of Justice Reports<sup>227</sup>. The incidence of gastroschisis was noted to double in North Carolina 1999-2001 in the same period the cannabis trade there was rising<sup>228</sup>. Figures of cannabis use in pregnant women in California by age were also recently reported to JAMA<sup>229</sup>, age group trend lines by age group which closely approximate those reported by CDC for the age incidence of gastroschisis in the USA<sup>230</sup> (Figure 1). Importantly much of the cannabis coming into both North Carolina and Florida is said to originate in Mexico<sup>227,231</sup>. An eight-fold rise in the rate of gastroschisis has been reported from Mexico<sup>232</sup>. Gastroschisis has also risen in Washington state<sup>233</sup>.
- 24) Cannabis has also been associated with 17 other major congenital defects by major Hawaiian epidemiological study reported by Forrester in 2007 when it was used alone<sup>221</sup>. When considered in association with other drug use – which in many cases cannabis leads to – cannabis use was associated with a further 19 major congenital defects.
- 25) In addition to the effect of cannabinoids on the epigenome and microtubules, cannabinoids have been firmly linked to a reduction of the ability of the cell to produce energy from their mitochondria<sup>78,82,91,234-249</sup>. An extensive and robust evidence base<sup>244</sup> now links cellular energy generation to the maintenance and care of cellular DNA<sup>250-253</sup>. Moreover, as the cellular energy charge falls so too DNA maintenance collapses, and indeed, the cell can spiral where its remaining energy resources, particularly as NAD<sup>+</sup>, are routed into failing and futile DNA repair, the cell slips into pseudohypoxic metabolism like the Warburg effect well known in cancerogenesis<sup>254</sup>, NAD<sup>+</sup> falls below the level required for further energy generation and cellular metabolism collapses. Hence this well-established collapse of the mitochondrial energy charge and transmembrane potential forms a potent engine of continuing and accelerating genotoxicity<sup>255</sup>.

26) Moreover, the well documented decline in mitochondrial respiration induced by cannabinoids, including tetrahydrocannabinol, cannabidiol and anandamide <sup>78,82,91,234-242,244-248</sup> achieves particular significance in the light of the robustly documented decline in cellular energetics including NAD<sup>+</sup> which not only occurs with age <sup>251,256-268</sup> but indeed, ***has now been shown to be one of the primary drivers of cellular and whole organismal aging*** <sup>250-254,263,269-289</sup>. This close parallel is illustrated in Figure 2. It follows therefore that ***cannabinoid administration (including THC and CBD) necessarily phenocopies cellular aging***. This implies of course that cannabinoid dependent patients are old at the cellular level. Indeed, normal human aging is phenocopied in the clinical syndrome of cannabinoid dependence which includes (most references are provided above):

- 1) Neurological deficits in:
  - i) attention,
  - ii) learning and
  - iii) memory;
  - iv) social withdrawal and disengagement and
  - v) academic and
  - vi) occupational underachievement
- 2) Psychiatric disorders including
  - i) Anxiety,
  - ii) Depression,
  - iii) Mixed Psychosis
  - iv) Bipolar Affective disorder and
  - v) Schizophrenia,
- 3) Respiratory disorders including:
  - i) Asthma
  - ii) Chronic Bronchitis (increased sputum production)
  - iii) Emphysema (Increased residual volume)
  - iv) Probably increased carcinomas of the aerodigestive tract
- 4) Immune suppression which generally implies
  - i) segmental immunostimulation in some parts of the immune system since  
the innate and adaptive immune systems exert profound homeostatic mechanisms in response to suppression of one of its parts;  
A Substantial literature on immunostimulation
- 5) Reproductive effects generally characterized by reduced
  - i) Male and
  - ii) Female fertility
- 6) Cardiovascular toxicity with elevated rates of
  - i) Myocardial infarction
  - ii) Cerebrovascular accident
  - iii) Arteritis
  - iv) Vascular age – vascular stiffness <sup>119</sup>
- 7) Genotoxicity in
  - i) Respiratory epithelium and
  - ii) Gonadal tissues.
- 8) Osteoporosis <sup>290-300</sup>

- 9) Cancers of the
  - i) Head and neck
  - ii) Larynx
  - iii) Lung
  - iv) Leukaemia
  - v) Prostate
  - vi) Cervix
  - vii) Testes
  - viii) Bladder
  - ix) Childhood neuroblastoma
  - x) Childhood acute lymphoblastic leukaemia
  - xi) Childhood Acuter Myeloid and myelomonocytic leukaemia
  - xii) Childhood rhabdomyosarcoma <sup>201,202</sup>.

**The issue here of course is that cannabinoid dependence therefore copies without exception all of the major disorders of old age, each of which is also faithfully phenocopied by cannabis dependence.**

**The most prominent disorders of older age include:**

- 1) Alzheimer's disease**
- 2) Cardiovascular and cerebrovascular disease**
- 3) Osteoporosis**
- 4) Systemic inflammatory syndrome**
- 5) Changes in lung volume and the mechanics of breathing**
- 6) Cancers**

Hence this provides one powerful pathway by which cannabinoid exposure can replicate and phenocopy the disorders of old age.

This is not of course to suggest that this is the only such pathway. Obviously changes of the general level of immune activity, or alterations of the level of DNA repair occurring directly or indirectly associated with cannabis use can form similar such pathways: both are well documented in cannabis use and also in the aging literature as major pathways implicated in systemic aging. Nevertheless, the decline in mitochondrial energetics together with its inherent genotoxic implications does seem to be a particularly well substantiated and robustly demonstrated pathway which must give serious pause to cannabinoid advocates if the sustainability of the health and welfare systems is to be factored in together with any consideration of individual patient, advocate and industrial-complex rights.

- 27) The genotoxicity of THC, CBD and CBN has been noted against sperm since at least 1999 (Zimmerman and Zimmerman in Nahas "Marijuana and Medicine" 1999, Springer). This is clearly highly significant as sperm go directly into the formation of the zygote and the new human individual.

- 28) CB1R receptors are known to exist intracellularly on both the membranes of endoplasmic reticulum and mitochondria. In both locations they can induce organellar stress and major cell toxicity including disruption of DNA maintenance. Interestingly mitochondrial outer membrane CB1R's signal via a complex signaling chain involving the G-protein transduction machinery, protein kinase A and cyclic-AMP across the intermembrane space to the inner membrane and cristae, in a fashion replicating much of the G-protein signaling occurring at the cell membrane. This machinery is also implicated in mitonuclear signaling, and the mitonuclear DNA balance between mitochondrial DNA and nuclear DNA transcriptional control, which has long been implicated in inducing the mitochondrial unfolded protein cellular stress response cell aging, stem cell behaviour and DNA genotoxic mechanisms<sup>248,301</sup>.
- 29) You are no doubt aware that human sperm are structured like express outboard motors behind DNA packets with layers of mitochondria densely coiled around the rotating flagellum which powers their progress in the female reproductive tract (Figure 3). These mitochondria also carry CB1R's and are significantly inhibited even at 100 nanomolar THC. The acrosome reaction is also inhibited<sup>239</sup>.
- 30) A similar arrangement is shown in Figure 4, where mitochondria are shown in green surrounding the mitotic spindle (pink, with the chromosomes shown in blue), which is the cellular machinery and apparatus of cell division. Mitosis and meiosis, the classical processes of cell division, are highly energy dependent and mitochondria are clearly positioned strategically to supply the required energy for this process, just as they are positioned in proximity to the root of the sperm flagellum rotor in that situation.
- 31) Cannabidiol is known to act via the PPAR $\gamma$  system<sup>101,302-308</sup>. PPAR $\gamma$  is known to have a major effect on gene expression, reproductive and embryonic and zygote function during development<sup>309-332</sup> so that significant genotoxic and / or teratogenic effects seem inevitable via this route. Drugs which act in this class, known as the thiazolidinediones, are classed as category B3 in pregnancy and caution is indicated in their use in pregnancy and lactation.
- 32) The Report of the Reproductive and Cancer Hazard Assessment Branch of the Office of Environmental Health Hazard Assessment of the Health Department of California was mentioned above in connection with the carcinogenicity of marijuana smoke<sup>333</sup>. ***Since virtually all mutagens are also teratogens*** it follows therefore from the basic tenets of mutagenesis that if cannabis is unsafe as a known carcinogen it must also be at the very least a putative teratogen.
- 33) CBD has also been noted to be a genotoxic in other studies<sup>334-336</sup>.
- 34) All of which points to major teratogenic activity for both THC and CBD.

Some of the quotations from Professor James Graham's classical book on the effects of THC in hamsters and white rabbits, the best animal models for human genotoxicity, bear repeating <sup>337</sup> :

- a) "The concentration of THC was relatively low and the **malignancy severe.**"
- b) "40-100µg resin/ml there occurred **marked inhibition of cell division.**
- c) "large total dose, Hamsters, 25-300mg/kg ..."oedema, **phocomelia, omphalocele, spina bifida, exencephaly,** multiple malformations and **myelocoele.** **This is a formidable list.**"
- d) "It is to this **anti-mitotic action** that the authors attribute the **embryotoxic** action of cannabis."
- e) "By such criteria resin or extract of cannabis would be **forbidden to women** during the first three months of **pregnancy.**" <sup>337</sup>

Indeed, even from the other side of the world I have heard many exceedingly adverse reports from US states in which cannabis has been legalized including Colorado, Washington, Oregon, Florida and California <sup>231,233,338-342</sup>. Taken together the above evidence suggests that these negative reports stem directly from the now known actions of cannabis and cannabinoids, and are by no means incidental epiphenomena somehow related to social constructs surrounding cannabis use or the product forms, dosages, or routes of administration involved <sup>343</sup>.

**Cannabis that contains increasingly high levels of THC is now widely available, particularly in the jurisdictions where the use of cannabis has been legalized. This means that another major genotoxin, akin to Thalidomide, is being unleashed on the USA and the world. This is clearly a very grave, and, indeed, an entirely preventable occurrence.**

Dr Frances Kelsey of FDA is said to have the public servant based at FDA who saved American from the thalidomide scandal which devastated so many other English-speaking nations including my own <sup>344</sup>. This occurred because the genotoxicity section of the file application with FDA was blank. It was blank because thalidomide tested positive in various white rabbit and guinea pig assays. **It is these same tests which cannabis is known to have failed** <sup>88,337,345,346</sup>. Dr Kelsey's photograph has been published in the medical press with President Kennedy for her service to the nation (Figure 5) <sup>344</sup>. The challenge to FDA at this time seems whether Science can triumph over agenda driven populism, its primary vehicle, the mass media, and its primary proximate driver the burgeoning cannabis industry. Since FDA is the Federal agency par excellence where Health Science is weighed, commissioned and thoughtfully considered the challenge in our time would appear to be no less.

Evidence to date does not suggest that major congenital malformations are as common after prenatal cannabis exposure as they are after prenatal thalidomide exposure. Nevertheless the qualitative similarities remain and indeed are prominent. It is yet to be seen whether the rate of congenital anomalies after cannabis are quantitatively as common: epidemiological studies in a high potency era have not been undertaken; and even the birth defects rates from most birth defects registers in western nations including that held by CDC, Atlanta appear to be seriously out of date at the time of writing. Moreover the non-linear dose response curve in



many cannabis genotoxicity studies which includes a sharp knee bend upwards beyond a certain threshold level which suggests that we could well be in for a very unpleasant quantitative surprise. At the time of writing this remains to be formally determined.

Dr Bertha Madras, Professor of Addiction Psychiatry at Harvard Medical School has recently argued against re-scheduling of cannabis. Her comments include the following:

*“Why do nations schedule drugs? ..... Nations schedule psychoactive drugs because we revere this three-pound organ (of our brain) differently than any other part of our body. It is the repository of our humanity. It is the place that enables us to write poetry and to do theater, to conjure up calculus and send rockets to Pluto three billion miles away, and to create I Phones and 3 D computer printing. And that is the magnificence of the human brain. Drugs can influence (the brain) adversely. So, this is not a war on drugs. This is a defense of our brains, the ultimate source of our humanity”<sup>347</sup>.*

I look forward to seeing the comments that you post concerning the reasons why the classification for marijuana should not be changed and that, indeed, the public should be alerted to the very harmful effects of marijuana with THC, especially in light of the wide range of marijuana’s harmful effects and the high potency of THC in today’s marijuana and in light of the idiosyncratic effects of marijuana of even low doses of THC and owing to the certain risk of harm to progeny and babies born to users of marijuana.

Please feel free to call on me if you would like further information concerning the research to which I have referred herein.

Yours sincerely,



Professor Dr. Stuart Reece,  
Edith Cowan University and  
University of Western Australia,  
Perth,  
Western Australia,  
Australia, 6009.

## References

- 1 Bloomfield, M. A., Ashok, A. H., Volkow, N. D. & Howes, O. D. The effects of Delta9-tetrahydrocannabinol on the dopamine system. *Nature* **539**, 369-377, doi:10.1038/nature20153 (2016).
- 2 DuPont, R. L. & Lieberman, J. A. Young Brains on Drugs. *Science* **344**, 557, doi:10.1126/science.1254989 (2014).
- 3 Nora Volkow (Director, NIDA), George Koob (Director, NIAAA), Alan Guttmacher (Director, NICHD), and Bob Croyle (Director, Division of Cancer Control and Population Sciences, NCI). *National Longitudinal Study of the Neurodevelopmental Consequences of Substance Use*, <<http://www.niaaa.nih.gov/news-events/news-noteworthy/national-longitudinal-study-neurodevelopmental-consequences-substance>> (2014).
- 4 Volkow, N. D., Compton, W. M. & Wargo, E. M. The Risks of Marijuana Use During Pregnancy. *JAMA* **317**, 129-130, doi:10.1001/jama.2016.18612 (2017).
- 5 Volkow, N. D., Compton, W. M. & Weiss, S. R. Adverse health effects of marijuana use. *N Engl J Med* **371**, 879, doi:10.1056/NEJMc1407928 (2014).
- 6 Volkow, N. D., Han, B., Compton, W. M. & Blanco, C. Marijuana Use During Stages of Pregnancy in the United States. *Ann Intern Med* **166**, 763-764, doi:10.7326/L17-0067 (2017).
- 7 Goldschmidt, L., Richardson, G. A., Willford, J. & Day, N. L. Prenatal marijuana exposure and intelligence test performance at age 6. *J Am Acad Child Adolesc Psychiatry* **47**, 254-263, doi:10.1097/chi.0b013e318160b3f0 (2008).
- 8 Penke, L. *et al.* Brain-wide white matter tract integrity is associated with information processing speed and general intelligence. *Mol Psychiatry* **17**, 955-955 (2012).
- 9 Wu, C. S., Jew, C. P. & Lu, H. C. Lasting impacts of prenatal cannabis exposure and the role of endogenous cannabinoids in the developing brain. *Future Neurol* **6**, 459-480 (2011).
- 10 DeRosse, P. *et al.* Adding insult to injury: childhood and adolescent risk factors for psychosis predict lower fractional anisotropy in the superior longitudinal fasciculus in healthy adults. *Psychiatry Res* **224**, 296-302, doi:10.1016/j.psychres.2014.09.001 (2014).
- 11 Madabhushi, R., Pan, L. & Tsai, L. H. DNA damage and its links to neurodegeneration. *Neuron* **83**, 266-282, doi:10.1016/j.neuron.2014.06.034 (2014).
- 12 Navakkode, S. & Korte, M. Pharmacological activation of CB1 receptor modulates long term potentiation by interfering with protein synthesis. *Neuropharmacology* **79**, 525-533, doi:10.1016/j.neuropharm.2013.11.018 (2014).
- 13 Becker, M. P., Collins, P. F., Lim, K. O., Muetzel, R. L. & Luciana, M. Longitudinal changes in white matter microstructure after heavy cannabis use. *Developmental cognitive neuroscience* **16**, 23-35, doi:10.1016/j.dcn.2015.10.004 (2015).
- 14 Lorenzetti, V. *et al.* Gross morphological brain changes with chronic, heavy cannabis use. *Br J Psychiatry* **206**, 77-78, doi:10.1192/bjp.bp.114.151407 (2015).
- 15 Vargish, G. A. *et al.* Persistent inhibitory circuit defects and disrupted social behaviour following in utero exogenous cannabinoid exposure. *Mol Psychiatry* **22**, 56-67, doi:10.1038/mp.2016.17 (2017).
- 16 Alvarez, F. J., Fierro, I. & Del Rio, M. C. Cannabis and driving: results from a general population survey. *Forensic science international* **170**, 111-116 (2007).
- 17 Fergusson, D. M., Horwood, L. J. & Boden, J. M. Is driving under the influence of cannabis becoming a greater risk to driver safety than drink driving? Findings from a longitudinal study. *Accident; analysis and prevention* **40**, 1345-1350, doi:S0001-4575(08)00026-2 [pii] 10.1016/j.aap.2008.02.005 (2008).
- 18 Grotenhermen, F. *et al.* Developing limits for driving under cannabis. *Addiction* **102**, 1910-1917 (2007).
- 19 Jones, C., Donnelly, N., Swift, W. & Weatherburn, D. Preventing cannabis users from driving under the influence of cannabis. *Accident; analysis and prevention* **38**, 854-861 (2006).
- 20 Jones, C. G., Swift, W., Donnelly, N. J. & Weatherburn, D. J. Correlates of driving under the influence of cannabis. *Drug Alcohol Depend* **88**, 83-86 (2007).
- 21 Kelly, E., Darke, S. & Ross, J. A review of drug use and driving: epidemiology, impairment, risk factors and risk perceptions. *Drug and alcohol review* **23**, 319-344 (2004).
- 22 McCarthy, D. M., Lynch, A. M. & Pederson, S. L. Driving after use of alcohol and marijuana in college students. *Psychol Addict Behav* **21**, 425-430 (2007).

- 23 McIntosh, J., O'Brien, T. & McKeganey, N. Drug driving and the management of risk: the perspectives and practices of a sample of problem drug users. *Int J Drug Policy* **19**, 248-254, doi:S0955-3959(06)00248-9 [pii] 10.1016/j.drugpo.2006.12.003 (2008).
- 24 Walsh, G. W. & Mann, R. E. On the high road: driving under the influence of cannabis in Ontario. *Canadian journal of public health* **90**, 260-263 (1999).
- 25 Wilson, D. Experience with drugs and driving in Queensland, Australia. *Medicine, science, and the law* **25**, 2-10 (1985).
- 26 Fergusson, D. M. & Horwood, L. J. Cannabis use and traffic accidents in a birth cohort of young adults. *Accident; analysis and prevention* **33**, 703-711, doi:S0001-4575(00)00082-8 [pii] (2001).
- 27 Gurman S. Legal pot in Colorado hasn't stopped black market. *Associated Press*, 1-2 (October 2014).
- 28 Wang, X., Dow-Edwards, D., Anderson, V., Minkoff, H. & Hurd, Y. L. Discrete opioid gene expression impairment in the human fetal brain associated with maternal marijuana use. *Pharmacogenomics J* **6**, 255-264, doi:10.1038/sj.tpj.6500375 (2006).
- 29 Cadoni, C., Pisanu, A., Solinas, M., Acquas, E. & Di Chiara, G. Behavioural sensitization after repeated exposure to Delta 9-tetrahydrocannabinol and cross-sensitization with morphine. *Psychopharmacology (Berl)* **158**, 259-266, doi:10.1007/s002130100875 (2001).
- 30 DiNieri, J. A. *et al.* Maternal cannabis use alters ventral striatal dopamine D2 gene regulation in the offspring. *Biol Psychiatry* **70**, 763-769, doi:10.1016/j.biopsych.2011.06.027 (2011).
- 31 Fergusson, D. M., Lynskey, M. T. & Horwood, L. J. The short-term consequences of early onset cannabis use. *Journal of abnormal child psychology* **24**, 499-512 (1996).
- 32 Fergusson, D. M. & Horwood, L. J. Early onset cannabis use and psychosocial adjustment in young adults. *Addiction* **92**, 279-296 (1997).
- 33 Fergusson, D. M. & Horwood, L. J. Does cannabis use encourage other forms of illicit drug use? *Addiction* **95**, 505-520 (2000).
- 34 Fergusson, D. M. & Horwood, L. J. Cannabis use and dependence in a New Zealand birth cohort. *The New Zealand medical journal* **113**, 156-158 (2000).
- 35 Fergusson, D. M., Horwood, L. J. & Swain-Campbell, N. Cannabis use and psychosocial adjustment in adolescence and young adulthood. *Addiction* **97**, 1123-1135 (2002).
- 36 Taylor, D. R. *et al.* A longitudinal study of the effects of tobacco and cannabis exposure on lung function in young adults. *Addiction* **97**, 1055-1061 (2002).
- 37 Fergusson, D. M., Horwood, L. J. & Beautrais, A. L. Cannabis and educational achievement. *Addiction* **98**, 1681-1692, doi:573 [pii] (2003).
- 38 Fergusson, D. M., Poulton, R., Smith, P. F. & Boden, J. M. Cannabis and psychosis. *BMJ (Clinical research ed)* **332**, 172-175, doi:332/7534/172 [pii] 10.1136/bmj.332.7534.172 (2006).
- 39 Fergusson, D. M. & Boden, J. M. Cannabis use and adult ADHD symptoms. *Drug Alcohol Depend* **95**, 90-96, doi:S0376-8716(07)00512-1 [pii] 10.1016/j.drugalcdep.2007.12.012 (2008).
- 40 Horwood, L. J. *et al.* Cannabis use and educational achievement: findings from three Australasian cohort studies. *Drug Alcohol Depend* **110**, 247-253, doi:S0376-8716(10)00109-2 [pii] 10.1016/j.drugalcdep.2010.03.008 (2010).
- 41 Meier, M. H. *et al.* Associations Between Cannabis Use and Physical Health Problems in Early Midlife: A Longitudinal Comparison of Persistent Cannabis vs Tobacco Users. *JAMA Psychiatry* **73**, 731-740, doi:10.1001/jamapsychiatry.2016.0637 (2016).
- 42 Fergusson, D. M. & Boden, J. M. Cannabis use and later life outcomes. *Addiction* **103**, 969-976; discussion 977-968, doi:ADD2221 [pii] 10.1111/j.1360-0443.2008.02221.x (2008).
- 43 Swain, N. R., Gibb, S. J., Horwood, L. J. & Fergusson, D. M. Alcohol and cannabis abuse/dependence symptoms and life satisfaction in young adulthood. *Drug and alcohol review* **31**, 327-333, doi:10.1111/j.1465-3362.2011.00339.x (2012).
- 44 Meier, M. H. *et al.* Persistent cannabis users show neuropsychological decline from childhood to midlife. *Proc Natl Acad Sci US A* **109**, E2657-2664, doi:10.1073/pnas.1206820109 (2012).
- 45 Thames, A. D., Arbid, N. & Sayegh, P. Cannabis use and neurocognitive functioning in a non-clinical sample of users. *Addictive behaviors* **39**, 994-999, doi:10.1016/j.addbeh.2014.01.019 (2014).

- 46 Buchy, L. *et al.* Evaluating the relationship between cannabis use and IQ in youth and young adults at clinical high risk of psychosis. *Psychiatry Res* **230**, 878-884, doi:10.1016/j.psychres.2015.11.033 (2015).
- 47 Castellanos-Ryan, N. *et al.* Adolescent cannabis use, change in neurocognitive function, and high-school graduation: A longitudinal study from early adolescence to young adulthood. *Dev Psychopathol* **29**, 1253-1266, doi:10.1017/S0954579416001280 (2017).
- 48 Bogaty, S. E. R., Lee, R. S. C., Hickie, I. B. & Hermens, D. F. Meta-analysis of neurocognition in young psychosis patients with current cannabis use. *J Psychiatr Res* **99**, 22-32, doi:10.1016/j.jpsychires.2018.01.010 (2018).
- 49 Grech, A., Van Os, J., Jones, P. B., Lewis, S. W. & Murray, R. M. Cannabis use and outcome of recent onset psychosis. *Eur Psychiatry* **20**, 349-353, doi:S0924-9338(04)00227-5 [pii] 10.1016/j.eurpsy.2004.09.013 (2005).
- 50 Henquet, C. *et al.* Prospective cohort study of cannabis use, predisposition for psychosis, and psychotic symptoms in young people. *BMJ (Clinical research ed)* **330**, 11, doi:bmj.38267.664086.63 [pii] 10.1136/bmj.38267.664086.63 (2005).
- 51 Henquet, C., Murray, R., Linszen, D. & van Os, J. The environment and schizophrenia: the role of cannabis use. *Schizophr Bull* **31**, 608-612, doi:sbi027 [pii] 10.1093/schbul/sbi027 (2005).
- 52 Monshouwer, K., Smit, F., de Graaf, R., van Os, J. & Vollebergh, W. First cannabis use: does onset shift to younger ages? Findings from 1988 to 2003 from the Dutch National School Survey on Substance Use. *Addiction* **100**, 963-970, doi:ADD1088 [pii] 10.1111/j.1360-0443.2005.01088.x (2005).
- 53 van Os, J., Henquet, C. & Stefanis, N. Cannabis-related psychosis and the gene-environment interaction: comments on Ferdinand *et al.* 2005. *Addiction* **100**, 874-875, doi:ADD1083 [pii] 10.1111/j.1360-0443.2005.01083.x (2005).
- 54 Henquet, C. & Van Os, J. The coherence of the evidence linking cannabis with psychosis. *Psychological medicine* **38**, 461-462; author reply 462-464, doi:S0033291707002279 [pii] 10.1017/S0033291707002279 (2008).
- 55 Konings, M., Henquet, C., Maharajh, H. D., Hutchinson, G. & Van Os, J. Early exposure to cannabis and risk for psychosis in young adolescents in Trinidad. *Acta psychiatrica Scandinavica* **118**, 209-213, doi:ACP1202 [pii] 10.1111/j.1600-0447.2008.01202.x (2008).
- 56 Luzi, S., Morrison, P. D., Powell, J., di Forti, M. & Murray, R. M. What is the mechanism whereby cannabis use increases risk of psychosis? *Neurotox Res* **14**, 105-112, doi:10.1007/BF03033802 (2008).
- 57 Veling, W., Mackenbach, J. P., van Os, J. & Hoek, H. W. Cannabis use and genetic predisposition for schizophrenia: a case-control study. *Psychological medicine* **38**, 1251-1256, doi:S0033291708003474 [pii] 10.1017/S0033291708003474 (2008).
- 58 Hall, W. The adverse health effects of cannabis use: What are they, and what are their implications for policy? *Int J Drug Policy*, doi:S0955-3959(09)00050-4 [pii] 10.1016/j.drugpo.2009.02.013 (2009).
- 59 Hall, W. & Lynskey, M. The challenges in developing a rational cannabis policy. *Current opinion in psychiatry* **22**, 258-262, doi:10.1097/YCO.0b013e3283298f36 (2009).
- 60 Hall, W. D. Challenges in reducing cannabis-related harm in Australia. *Drug and alcohol review* **28**, 110-116, doi:DAR039 [pii] 10.1111/j.1465-3362.2008.00039.x (2009).
- 61 Henquet, C. *et al.* COMT ValMet moderation of cannabis-induced psychosis: a momentary assessment study of 'switching on' hallucinations in the flow of daily life. *Acta psychiatrica Scandinavica* **119**, 156-160, doi:ACP1265 [pii] 10.1111/j.1600-0447.2008.01265.x (2009).
- 62 Spechler, P. A. *et al.* Cannabis use in early adolescence: Evidence of amygdala hypersensitivity to signals of threat. *Developmental cognitive neuroscience* **16**, 63-70, doi:10.1016/j.dcn.2015.08.007 (2015).
- 63 Wu, T. C., Tashkin, D. P., Djahed, B. & Rose, J. E. Pulmonary hazards of smoking marijuana as compared with tobacco. *N Engl J Med* **318**, 347-351 (1988).
- 64 Wu, T. C., Tashkin, D. P., Rose, J. E. & Djahed, B. Influence of marijuana potency and amount of cigarette consumed on marijuana smoking pattern. *Journal of psychoactive drugs* **20**, 43-46 (1988).

- 65 Fligiel, S. E. *et al.* Marijuana exposure and pulmonary alterations in primates. *Pharmacology, biochemistry, and behavior* **40**, 637-642 (1991).
- 66 Sherman, M. P., Roth, M. D., Gong, H., Jr. & Tashkin, D. P. Marijuana smoking, pulmonary function, and lung macrophage oxidant release. *Pharmacology, biochemistry, and behavior* **40**, 663-669 (1991).
- 67 Wu, H. D., Wright, R. S., Sassoon, C. S. & Tashkin, D. P. Effects of smoked marijuana of varying potency on ventilatory drive and metabolic rate. *The American review of respiratory disease* **146**, 716-721 (1992).
- 68 Tashkin, D. P. Is frequent marijuana smoking harmful to health? *The Western journal of medicine* **158**, 635-637 (1993).
- 69 Simmons, M. S. & Tashkin, D. P. The relationship of tobacco and marijuana smoking characteristics. *Life Sci* **56**, 2185-2191 (1995).
- 70 Baldwin, G. C. *et al.* Marijuana and cocaine impair alveolar macrophage function and cytokine production. *American journal of respiratory and critical care medicine* **156**, 1606-1613 (1997).
- 71 Barsky, S. H., Roth, M. D., Kleerup, E. C., Simmons, M. & Tashkin, D. P. Histopathologic and molecular alterations in bronchial epithelium in habitual smokers of marijuana, cocaine, and/or tobacco. *Journal of the National Cancer Institute* **90**, 1198-1205 (1998).
- 72 Sarafian, T. A., Magallanes, J. A., Shau, H., Tashkin, D. & Roth, M. D. Oxidative stress produced by marijuana smoke. An adverse effect enhanced by cannabinoids. *American journal of respiratory cell and molecular biology* **20**, 1286-1293 (1999).
- 73 Zhang, Z. F. *et al.* Marijuana use and increased risk of squamous cell carcinoma of the head and neck. *Cancer Epidemiol Biomarkers Prev* **8**, 1071-1078 (1999).
- 74 Zhu, L. X. *et al.* Delta-9-tetrahydrocannabinol inhibits antitumor immunity by a CB2 receptor-mediated, cytokine-dependent pathway. *J Immunol* **165**, 373-380, doi:10.1172/jci165n1p373 [pii] (2000).
- 75 Roth, M. D. *et al.* Induction and regulation of the carcinogen-metabolizing enzyme CYP1A1 by marijuana smoke and delta (9)-tetrahydrocannabinol. *American journal of respiratory cell and molecular biology* **24**, 339-344 (2001).
- 76 Tashkin, D. P. Airway effects of marijuana, cocaine, and other inhaled illicit agents. *Current opinion in pulmonary medicine* **7**, 43-61 (2001).
- 77 Tashkin, D. P., Baldwin, G. C., Sarafian, T., Dubinett, S. & Roth, M. D. Respiratory and immunologic consequences of marijuana smoking. *Journal of clinical pharmacology* **42**, 71S-81S (2002).
- 78 Sarafian, T. A., Kouyoumjian, S., Khoshaghideh, F., Tashkin, D. P. & Roth, M. D. Delta 9-tetrahydrocannabinol disrupts mitochondrial function and cell energetics. *American journal of physiology* **284**, L298-306, doi:10.1152/ajplung.00157.2002 (2003).
- 79 Roth, M. D., Whittaker, K., Salehi, K., Tashkin, D. P. & Baldwin, G. C. Mechanisms for impaired effector function in alveolar macrophages from marijuana and cocaine smokers. *J Neuroimmunol* **147**, 82-86 (2004).
- 80 Tashkin, D. P. Smoked marijuana as a cause of lung injury. *Monaldi archives for chest disease = Archivio Monaldi per le malattie del torace / Fondazione clinica del lavoro, IRCCS [and] Istituto di clinica fisiologica e malattie apparato respiratorio, Universita di Napoli, Secondo ateneo* **63**, 93-100 (2005).
- 81 Copersino, M. L. *et al.* Cannabis withdrawal among non-treatment-seeking adult cannabis users. *Am J Addict* **15**, 8-14 (2006).
- 82 Sarafian, T. A. *et al.* Inhaled marijuana smoke disrupts mitochondrial energetics in pulmonary epithelial cells in vivo. *American journal of physiology* **290**, L1202-1209 (2006).
- 83 Alibhai, I. N., Green, T. A., Potashkin, J. A. & Nestler, E. J. Regulation of fosB and DeltafosB mRNA expression: in vivo and in vitro studies. *Brain Res* **1143**, 22-33, doi:S0006-8993(07)00139-4 [pii] 10.1016/j.brainres.2007.01.069 (2007).
- 84 Gong, H., Jr., Fligiel, S., Tashkin, D. P. & Barbers, R. G. Tracheobronchial changes in habitual, heavy smokers of marijuana with and without tobacco. *The American review of respiratory disease* **136**, 142-149 (1987).
- 85 British Lung Foundation. (London, 2005).
- 86 Wright, P. L., Smith, S. H., Keplinger, M. L., Calandra, J. C. & Braude, M. C. Reproductive and teratologic studies with  $\Delta^9$ -tetrahydrocannabinol and crude marijuana extract. *Toxicology and applied pharmacology* **38**, 223-235, doi:10.1016/0041-008X(76)90131-9 (1976).
- 87 Hatoum, N. S., Davis, W. M., Elsohly, M. A. & Turner, C. E. Perinatal exposure to cannabichromene and  $\Delta^9$ -tetrahydrocannabinol: Separate and combined effects on viability of pups and

- on male reproductive system at maturity. *Toxicology letters* **8**, 141-146, doi:10.1016/0378-4274(81)90042-4 (1981).
- 88 Braude, M. C. Marijuana effects on the endocrine and reproductive systems. Discussion and recommendations. *NIDA Res Monogr* **44**, 124-129 (1984).
- 89 Dalterio S., Steger R.W. & Bartke A. in *Marijuana in Medicine* Vol. 1 (eds G. G. Nahas, Sutin K.M., Harvey D.J., & Agurell S.) Ch. 35, 441-448 (Humana Press, 1999).
- 90 Smith C.G., Almirez R.G., Sher P.M. & Asch R.H. in *Marijuana and Medicine* Vol. 1 (eds G. G. Nahas, Sutin K.M., Harvey D.J., & Agurell S.) Ch. 30, 379-384 (Humana Press, 1999).
- 91 Rossato, M., Pagano, C. & Vettor, R. The cannabinoid system and male reproductive functions. *Journal of neuroendocrinology* **20 Suppl 1**, 90-93 (2008).
- 92 Galiegue, S. *et al.* Expression of central and peripheral cannabinoid receptors in human immune tissues and leukocyte subpopulations. *Eur J Biochem* **232**, 54-61 (1995).
- 93 Salzet, M., Breton, C., Bisogno, T. & Di Marzo, V. Comparative biology of the endocannabinoid system possible role in the immune response. *Eur J Biochem* **267**, 4917-4927 (2000).
- 94 Klein, T. W. *et al.* The cannabinoid system and immune modulation. *Journal of leukocyte biology* **74**, 486-496 (2003).
- 95 El-Gohary, M. & Eid, M. A. Effect of cannabinoid ingestion (in the form of bhang) on the immune system of high school and university students. *Human & experimental toxicology* **23**, 149-156 (2004).
- 96 McKallip, R. J., Nagarkatti, M. & Nagarkatti, P. S. Delta-9-tetrahydrocannabinol enhances breast cancer growth and metastasis by suppression of the antitumor immune response. *J Immunol* **174**, 3281-3289, doi:174/6/3281 [pii] (2005).
- 97 Klein, T. W. & Cabral, G. A. Cannabinoid-induced immune suppression and modulation of antigen-presenting cells. *J Neuroimmune Pharmacol* **1**, 50-64 (2006).
- 98 Eisenstein, T. K., Meissler, J. J., Wilson, Q., Gaughan, J. P. & Adler, M. W. Anandamide and Delta9-tetrahydrocannabinol directly inhibit cells of the immune system via CB2 receptors. *J Neuroimmunol* **189**, 17-22, doi:S0165-5728(07)00185-3 [pii] 10.1016/j.jneuroim.2007.06.001 (2007).
- 99 Xu, H. *et al.* Anti-inflammatory property of the cannabinoid receptor-2-selective agonist JWH-133 in a rodent model of autoimmune uveoretinitis. *Journal of leukocyte biology* **82**, 532-541, doi:jlb.0307159 [pii] 10.1189/jlb.0307159 (2007).
- 100 Rodgers, K. M. *et al.* The cortical innate immune response increases local neuronal excitability leading to seizures. *Brain* **132**, 2478-2486, doi:awp177 [pii] 10.1093/brain/awp177 (2009).
- 101 De Filippis, D. *et al.* Cannabidiol reduces intestinal inflammation through the control of neuroimmune axis. *PLoS One* **6**, e28159, doi:10.1371/journal.pone.0028159 (2011).
- 102 Giacoppo, S. *et al.* A new formulation of cannabidiol in cream shows therapeutic effects in a mouse model of experimental autoimmune encephalomyelitis. *Daru* **23**, 48, doi:10.1186/s40199-015-0131-8 (2015).
- 103 Kozela, E. *et al.* Pathways and gene networks mediating the regulatory effects of cannabidiol, a nonpsychoactive cannabinoid, in autoimmune T cells. *J Neuroinflammation* **13**, 136, doi:10.1186/s12974-016-0603-x (2016).
- 104 Gonzalez-Garcia, C. *et al.* Mechanisms of action of cannabidiol in adoptively transferred experimental autoimmune encephalomyelitis. *Experimental neurology* **298**, 57-67, doi:10.1016/j.expneurol.2017.08.017 (2017).
- 105 Stenchever, M. A. & Allen, M. The effect of delta-9-tetrahydrocannabinol on the chromosomes of human lymphocytes in vitro. *Am J Obstet Gynecol* **114**, 819-821, doi:0002-9378(72)90908-8 [pii] (1972).
- 106 Henrich, R. T., Nogawa, T. & Morishima, A. In vitro induction of segregational errors of chromosomes by natural cannabinoids in normal human lymphocytes. *Environ Mutagen* **2**, 139-147 (1980).
- 107 Wallace, J. M., Tashkin, D. P., Oishi, J. S. & Barbers, R. G. Peripheral blood lymphocyte subpopulations and mitogen responsiveness in tobacco and marijuana smokers. *Journal of psychoactive drugs* **20**, 9-14 (1988).
- 108 Sherman, M. P. *et al.* Effects of smoking marijuana, tobacco or cocaine alone or in combination on DNA damage in human alveolar macrophages. *Life Sci* **56**, 2201-2207 (1995).
- 109 McLaren, J., Swift, W., Dillon, P. & Allsop, S. Cannabis potency and contamination: a review of the literature. *Addiction* **103**, 1100-1109 (2008).

- 110 Volkow, N. D., Baler, R. D., Compton, W. M. & Weiss, S. R. B. Adverse Health Effects of Marijuana Use. *New England Journal of Medicine* **370**, 2219-2227, doi:doi:10.1056/NEJMra1402309 (2014).
- 111 Compton, W. M., Volkow, N. D. & Lopez, M. F. Medical Marijuana Laws and Cannabis Use: Intersections of Health and Policy. *JAMA Psychiatry* **74**, 559-560, doi:10.1001/jamapsychiatry.2017.0723 (2017).
- 112 Volkow, N. D. *et al.* Decreased dopamine brain reactivity in marijuana abusers is associated with negative emotionality and addiction severity. *Proc Natl Acad Sci U S A* **111**, E3149-3156, doi:10.1073/pnas.1411228111 (2014).
- 113 Hall, W. & Degenhardt, L. Adverse health effects of non-medical cannabis use. *Lancet* **374**, 1383-1391, doi:10.1016/S0140-6736(09)61037-0 (2009).
- 114 Degenhardt, L. *et al.* The persistence of the association between adolescent cannabis use and common mental disorders into young adulthood. *Addiction* **108**, 124-133, doi:10.1111/j.1360-0443.2012.04015.x (2013).
- 115 Hall, W. What has research over the past two decades revealed about the adverse health effects of recreational cannabis use? *Addiction* **110**, 19-35, doi:10.1111/add.12703 (2015).
- 116 Hall, W. & Degenhardt, L. High potency cannabis: a risk factor for dependence, poor psychosocial outcomes, and psychosis. *BMJ (Clinical research ed)* **350**, h1205, doi:10.1136/bmj.h1205 (2015).
- 117 Hall, W. & Solowij, N. Adverse effects of cannabis. *Lancet* **352**, 1611-1616 (1998).
- 118 Reece, A. S. Chronic toxicology of cannabis. *Clinical Toxicology* **47**, 517-524, doi:10.1080/15563650903074507 (2009).
- 119 Reece A.S., Norman, A. & Hulse G.K. Cannabis Exposure as an Interactive Cardiovascular Risk Factor and Accelerant of Organismal Ageing – A Longitudinal Study. *BMJ - Open In Press*, doi: <http://dx.doi.org/10.1136/bmjopen-2016-011891> (2016).
- 120 Blazquez, C. *et al.* Cannabinoids inhibit the vascular endothelial growth factor pathway in gliomas. *Cancer Res* **64**, 5617-5623, doi:10.1158/0008-5472.CAN-03-3927 (2004).
- 121 DeFilippis, E. M. *et al.* Cocaine and Marijuana Use among Young Adults Presenting with Myocardial Infarction: The Partners YOUNG-MI Registry. *Journal of the American College of Cardiology*, doi:10.1016/j.jacc.2018.02.047 (2018).
- 122 Desai, R. *et al.* Recreational Marijuana Use and Acute Myocardial Infarction: Insights from Nationwide Inpatient Sample in the United States. *Cureus* **9**, e1816, doi:10.7759/cureus.1816 (2017).
- 123 Frost, L., Mostofsky, E., Rosenbloom, J. I., Mukamal, K. J. & Mittleman, M. A. Marijuana use and long-term mortality among survivors of acute myocardial infarction. *Am Heart J* **165**, 170-175, doi:10.1016/j.ahj.2012.11.007 (2013).
- 124 Miller, W. E., Spiekerman, R. E. & Hepper, N. G. Pneumomediastinum resulting from performing Valsalva maneuvers during marijuana smoking. *Chest* **62**, 233-234 (1972).
- 125 Zagon, I. S., McLaughlin, P. J., Goodman, S. R. & Rhodes, R. E. Opioid receptors and endogenous opioids in diverse human and animal cancers. *Journal of the National Cancer Institute* **79**, 1059-1065 (1987).
- 126 Hess, G. D. & Zagon, I. S. Endogenous opioid systems and neural development: ultrastructural studies in the cerebellar cortex of infant and weanling rats. *Brain research bulletin* **20**, 473-478 (1988).
- 127 Barbers, R. G., Evans, M. J., Gong, H., Jr. & Tashkin, D. P. Enhanced alveolar monocytic phagocyte (macrophage) proliferation in tobacco and marijuana smokers. *The American review of respiratory disease* **143**, 1092-1095 (1991).
- 128 Bourque, L. B., Tashkin, D. P., Clark, V. A. & Schuler, R. Demographic and health characteristics of heavy marijuana smokers in Los Angeles County. *The International journal of the addictions* **26**, 739-755 (1991).
- 129 Isayama, T., McLaughlin, P. J. & Zagon, I. S. Endogenous opioids regulate cell proliferation in the retina of developing rat. *Brain Res* **544**, 79-85 (1991).
- 130 Kay, M. M., Hughes, J., Zagon, I. & Lin, F. B. Brain membrane protein band 3 performs the same functions as erythrocyte band 3. *Proc Natl Acad Sci U S A* **88**, 2778-2782 (1991).
- 131 Lambrecht, G. L., Malbrain, M. L., Coremans, P., Verbist, L. & Verhaegen, H. Acute renal infarction and heavy marijuana smoking. *Nephron* **70**, 494-496 (1995).
- 132 Chen, H., Campisi, J. & Padmanabhan, R. SV40 large T antigen transactivates the human cdc2 promoter by inducing a CCAAT box binding factor. *J Biol Chem* **271**, 13959-13967 (1996).
- 133 Fowler, J. S. *et al.* Comparison of Brain Glucose Metabolism and Monoamine Oxidase B (MAO B) in Traumatic Brain Injury. *Clin Positron Imaging* **2**, 71-79 (1999).



- 134 Okereke, U. N., Weber, B. E. & Israel, R. H. Spontaneous pneumomediastinum in an 18-year-old black Sudanese high school student. *Journal of the National Medical Association* **91**, 357-359 (1999).
- 135 Grella, C. E., Joshi, V. & Hser, Y. I. Program variation in treatment outcomes among women in residential drug treatment. *Evaluation review* **24**, 364-383 (2000).
- 136 Hser, Y. I., Hoffman, V., Grella, C. E. & Anglin, M. D. A 33-year follow-up of narcotics addicts. *Arch Gen Psychiatry* **58**, 503-508 (2001).
- 137 Blasco, M. Profile. Maria Blasco. Interview by Laura Spinney. *Trends Cell Biol* **12**, 489 (2002).
- 138 Hosokawa, M. A higher oxidative status accelerates senescence and aggravates age-dependent disorders in SAMP strains of mice. *Mech Ageing Dev* **123**, 1553-1561 (2002).
- 139 Jones, R. T. Cardiovascular system effects of marijuana. *Journal of clinical pharmacology* **42**, 58S-63S (2002).
- 140 Klatsky, A. L., Armstrong, M. A., Friedman, G. D. & Sidney, S. Alcohol drinking and risk of hemorrhagic stroke. *Neuroepidemiology* **21**, 115-122 (2002).
- 141 Melbourne Division of General Practice. *Relationships between Mental Health, personal circumstances and drug use in young Victorian Australians*. (AGPS, 2002).
- 142 Sidney, S. Cardiovascular consequences of marijuana use. *Journal of clinical pharmacology* **42**, 64S-70S (2002).
- 143 Blasco, M., Losada, J., Fernandez Val, J. F. & Sarria, R. [Transitional bladder carcinoma TaG1: role of the EGFr tyrosin kinase activation in the cellular proliferation]. *Med Clin (Barc)* **121**, 641-644 (2003).
- 144 Grella, C. E., Hser, Y. I. & Hsieh, S. C. Predictors of drug treatment re-entry following relapse to cocaine use in DATOS. *J Subst Abuse Treat* **25**, 145-154 (2003).
- 145 Ruiz Villaverde, R., Blasco Melguizo, J., Linares Solano, J. & Serrano Ortega, S. Lichen planus-like eruption due to enalapril. *J Eur Acad Dermatol Venereol* **17**, 612-614 (2003).
- 146 Gonzalez, S. *et al.* Behavioral and molecular changes elicited by acute administration of SR141716 to Delta9-tetrahydrocannabinol-tolerant rats: an experimental model of cannabinoid abstinence. *Drug Alcohol Depend* **74**, 159-170 (2004).
- 147 Harrist, A. *et al.* Alteration of hippocampal cell proliferation in mice lacking the beta 2 subunit of the neuronal nicotinic acetylcholine receptor. *Synapse* **54**, 200-206 (2004).
- 148 Beck, J. D. *et al.* Periodontal disease and coronary heart disease: a reappraisal of the exposure. *Circulation* **112**, 19-24 (2005).
- 149 Desvarieux, M. *et al.* Periodontal microbiota and carotid intima-media thickness: the Oral Infections and Vascular Disease Epidemiology Study (INVEST). *Circulation* **111**, 576-582 (2005).
- 150 Gatley, S. J. *et al.* PET imaging in clinical drug abuse research. *Curr Pharm Des* **11**, 3203-3219 (2005).
- 151 Kalivas, P. W., Volkow, N. & Seamans, J. Unmanageable motivation in addiction: a pathology in prefrontal-accumbens glutamate transmission. *Neuron* **45**, 647-650 (2005).
- 152 Steingrimsson, E., Copeland, N. G. & Jenkins, N. A. Melanocyte stem cell maintenance and hair graying. *Cell* **121**, 9-12 (2005).
- 153 Beyond Blue. *Beyond Blue*, <<http://www.beyondblue.org.au/>> (2006).
- 154 Volkow, N. D. Hispanic drug abuse research: challenges and opportunities. *Drug Alcohol Depend* **84 Suppl 1**, S4-7 (2006).
- 155 Alia-Klein, N. *et al.* What is in a word? No versus Yes differentially engage the lateral orbitofrontal cortex. *Emotion* **7**, 649-659 (2007).
- 156 Ch'ng, C. W. *et al.* Drug use in motor vehicle drivers presenting to an Australian, adult major trauma centre. *Emerg Med Australas* **19**, 359-365 (2007).
- 157 Fosados, R., Evans, E. & Hser, Y. I. Ethnic differences in utilization of drug treatment services and outcomes among Proposition 36 offenders in California. *J Subst Abuse Treat* (2007).
- 158 Niv, N., Wong, E. C. & Hser, Y. I. Asian Americans in community-based substance abuse treatment: Service needs, utilization, and outcomes. *J Subst Abuse Treat* **33**, 313-319 (2007).
- 159 Ortar, G. *et al.* Carbamoyl tetrazoles as inhibitors of endocannabinoid inactivation: A critical revisitation. *Eur J Med Chem* (2007).
- 160 Rock, R. B. *et al.* WIN55,212-2-mediated inhibition of HIV-1 expression in microglial cells: involvement of cannabinoid receptors. *J Neuroimmune Pharmacol* **2**, 178-183 (2007).
- 161 Starowicz, K. *et al.* Tonic endovanilloid facilitation of glutamate release in brainstem descending antinociceptive pathways. *J Neurosci* **27**, 13739-13749 (2007).
- 162 Schneider, H. J., Jha, S. & Burnand, K. G. Progressive arteritis associated with cannabis use. *Eur J Vasc Endovasc Surg* **18**, 366-367, doi:10.1053/ejvs.1999.0859 (1999).



- 163 Disdier, P. *et al.* Cannabis arteritis revisited--ten new case reports. *Angiology* **52**, 1-5 (2001).
- 164 Ducasse, E. *et al.* Popliteal artery entrapment associated with cannabis arteritis. *Eur J Vasc Endovasc Surg* **27**, 327-332, doi:10.1016/S1533 (2004).
- 165 Kogan, N. M. *et al.* A cannabinoid quinone inhibits angiogenesis by targeting vascular endothelial cells. *Mol Pharmacol* **70**, 51-59, doi:10.1124/mol.105.021089 (2006).
- 166 Netherland, C. D., Pickle, T. G., Bales, A. & Thewke, D. P. Cannabinoid receptor type 2 (CB2) deficiency alters atherosclerotic lesion formation in hyperlipidemic Ldlr-null mice. *Atherosclerosis* **213**, 102-108, doi:10.1016/j.atherosclerosis.2010.07.060 (2010).
- 167 Steffens, S. & Pacher, P. Targeting cannabinoid receptor CB(2) in cardiovascular disorders: promises and controversies. *Br J Pharmacol* **167**, 313-323, doi:10.1111/j.1476-5381.2012.02042.x (2012).
- 168 Molica, F. *et al.* Endogenous cannabinoid receptor CB1 activation promotes vascular smooth-muscle cell proliferation and neointima formation. *J Lipid Res* **54**, 1360-1368, doi:10.1194/jlr.M035147(2013).
- 169 Slavic, S. *et al.* Cannabinoid receptor 1 inhibition improves cardiac function and remodelling after myocardial infarction and in experimental metabolic syndrome. *J Mol Med (Berl)* **91**, 811-823, doi:10.1007/s00109-013-1034-0 (2013).
- 170 Jouanjus, E., Lapeyre-Mestre, M., Micalef, J., French Association of the Regional, A. & Dependence Monitoring Centres Working Group on Cannabis, C. Cannabis use: signal of increasing risk of serious cardiovascular disorders. *J Am Heart Assoc* **3**, e000638, doi:10.1161/JAHA.113.000638 (2014).
- 171 Stanley, C. & O'Sullivan, S. E. Vascular targets for cannabinoids: animal and human studies. *Br J Pharmacol* **171**, 1361-1378, doi:10.1111/bph.12560 (2014).
- 172 Kosior, D. A., Filipiak, K. J., Stolarz, P. & Opolski, G. Paroxysmal atrial fibrillation in a young female patient following marijuana intoxication--a case report of possible association. *Med Sci Monit* **6**, 386-389 (2000).
- 173 Rezkalla, S. H., Sharma, P. & Kloner, R. A. Coronary no-flow and ventricular tachycardia associated with habitual marijuana use. *Annals of emergency medicine* **42**, 365-369, doi:10.1067/mem.2003.297 (2003).
- 174 Fisher, B. A., Ghuran, A., Vadamalai, V. & Antonios, T. F. Cardiovascular complications induced by cannabis smoking: a case report and review of the literature. *Emerg Med J* **22**, 679-680, doi:10.1136/emj.2004.014969 (2005).
- 175 Baranchuk, A., Johri, A. M., Simpson, C. S., Methot, M. & Redfearn, D. P. Ventricular fibrillation triggered by marijuana use in a patient with ischemic cardiomyopathy: a case report. *Cases J* **1**, 373, doi:10.1186/1757-1626-1-373 (2008).
- 176 Korantzopoulos, P., Liu, T., Papaioannides, D., Li, G. & Goudevenos, J. A. Atrial fibrillation and marijuana smoking. *International journal of clinical practice* **62**, 308-313, doi:10.1111/j.1742-1241.2007.01505.x (2008).
- 177 Diffley, M., Armenian, P., Gerona, R., Reinhartz, O. & Avasarala, K. Catecholaminergic polymorphic ventricular tachycardia found in an adolescent after a methylenedioxymethamphetamine and marijuana-induced cardiac arrest. *Crit Care Med* **40**, 2223-2226, doi:10.1097/CCM.0b013e318250a870 (2012).
- 178 Heath, T. S., Burroughs, Z., Thompson, A. J. & Tecklenburg, F. W. Acute intoxication caused by a synthetic cannabinoid in two adolescents. *J Pediatr Pharmacol Ther* **17**, 177-181, doi:10.5863/1551-6776-17.2.177 (2012).
- 179 Menahem, S. Cardiac asystole following cannabis (marijuana) usage--additional mechanism for sudden death? *Forensic science international* **233**, e3-5, doi:10.1016/j.forsciint.2013.10.007 (2013).
- 180 Casier, I., Vanduyhoven, P., Haine, S., Vrints, C. & Jorens, P. G. Is recent cannabis use associated with acute coronary syndromes? An illustrative case series. *Acta Cardiol* **69**, 131-136, doi:10.2143/AC.69.2.3017293 (2014).
- 181 Korantzopoulos, P. Marijuana smoking is associated with atrial fibrillation. *The American journal of cardiology* **113**, 1085-1086, doi:10.1016/j.amjcard.2014.01.001 (2014).
- 182 Wolff, V. *et al.* Cannabis-related stroke: myth or reality? *Stroke: a journal of cerebral circulation* **44**, 558-563, doi:10.1161/STROKEAHA.112.671347 (2013).
- 183 Reece, A. S., Norman, A. & Hulse, G. K. Cannabis exposure as an interactive cardiovascular risk factor and accelerant of organismal ageing: a longitudinal study. *BMJ Open* **6**, e011891, doi:10.1136/bmjopen-2016-011891 (2016).

- 184 Hering, R. I., Better, W. & Cadet, J. L. EEG of chronic marijuana users during abstinence: relationship to years of marijuana use, cerebral blood flow and thyroid function. *Clin Neurophysiol* **119**, 321-331, doi:10.1016/j.clinph.2007.09.140 (2008).
- 185 Mathew, R. J., Wilson, W. H., Humphreys, D., Lowe, J. V. & Wiethe, K. E. Middle cerebral artery velocity during upright posture after marijuana smoking. *Acta psychiatrica Scandinavica* **86**, 173-178 (1992).
- 186 Wagner, J. A., Jarai, Z., Batkai, S. & Kunos, G. Hemodynamic effects of cannabinoids: coronary and cerebral vasodilation mediated by cannabinoid CB(1) receptors. *European journal of pharmacology* **423**, 203-210 (2001).
- 187 Wolff, V. *et al.* High frequency of intracranial arterial stenosis and cannabis use in ischaemic stroke in the young. *Cerebrovascular diseases (Basel, Switzerland)* **37**, 438-443, doi:10.1159/000363618 (2014).
- 188 Wang, X. *et al.* One Minute of Marijuana Secondhand Smoke Exposure Substantially Impairs Vascular Endothelial Function. *J Am Heart Assoc* **5**, doi:10.1161/JAHA.116.003858 (2016).
- 189 Bileck, A. *et al.* Impact of a synthetic cannabinoid (CP-47,497-C8) on protein expression in human cells: evidence for induction of inflammation and DNA damage. *Archives of toxicology* **90**, 1369-1382, doi:10.1007/s00204-015-1569-7 (2016).
- 190 Strait, J. B. & Lakatta, E. G. Aging-associated cardiovascular changes and their relationship to heart failure. *Heart Fail Clin* **8**, 143-164, doi:S1551-7136(11)00101-2 [pii]; 10.1016/j.hfc.2011.08.011 (2012).
- 191 Le Couteur, D. G. & Lakatta, E. G. A vascular theory of aging. *J Gerontol A Biol Sci Med Sci* **65**, 1025-1027, doi:glq135 [pii]; 10.1093/gerona/glq135 (2010).
- 192 Sutton-Tyrrell, K. *et al.* Elevated aortic pulse wave velocity, a marker of arterial stiffness, predicts cardiovascular events in well-functioning older adults. *Circulation* **111**, 3384-3390, doi:CIRCULATIONAHA.104.483628 [pii]; 10.1161/CIRCULATIONAHA.104.483628 (2005).
- 193 Lubinsky, M. A vascular and thrombotic model of gastroschisis. *Am J Med Genet A* **164A**, 915-917, doi:10.1002/ajmg.a.36370 (2014).
- 194 Folkerth, R. D. *et al.* Gastroschisis, destructive brain lesions, and placental infarction in the second trimester suggest a vascular pathogenesis. *Pediatr Dev Pathol* **16**, 391-396, doi:10.2350/13-03-1316-CR.1 (2013).
- 195 Werler, M. M., Mitchell, A. A., Moore, C. A., Honein, M. A. & National Birth Defects Prevention, S. Is there epidemiologic evidence to support vascular disruption as a pathogenesis of gastroschisis? *Am J Med Genet A* **149A**, 1399-1406, doi:10.1002/ajmg.a.32897 (2009).
- 196 Van Allen, M. I. & Smith, D. W. Vascular pathogenesis of gastroschisis. *J Pediatr* **98**, 662-663 (1981).
- 197 Hoyme, H. E., Higginbottom, M. C. & Jones, K. L. The vascular pathogenesis of gastroschisis: intrauterine interruption of the omphalomesenteric artery. *J Pediatr* **98**, 228-231 (1981).
- 198 Pistor, G., Marzheuser-Brands, S., Weber, G. & Streich, R. Intraoperative vascular assessment for estimation of risk in primary closure of omphalocele and gastroschisis. *Pediatr Surg Int* **11**, 86-90, doi:10.1007/BF00183732 (1996).
- 199 Skarsgard, E. D. *et al.* Maternal risk factors for gastroschisis in Canada. *Birth Defects Res A Clin Mol Teratol* **103**, 111-118, doi:10.1002/bdra.23349 (2015).
- 200 Moore A., Roulean J. & Skarsgard E. Vol. 1 (ed Health Canada Public Health Agency of Canada) 57-63 (Health Canada, Ottawa, 2013).
- 201 Reece, A. S. Chronic toxicology of cannabis. *Clin Toxicol (Phila)* **47**, 517-524, doi:10.1080/15563650903074507 (2009).
- 202 Reece, A. S. & Hulse, G. K. Chromothripsis and epigenomics complete causality criteria for cannabis- and addiction-connected carcinogenicity, congenital toxicity and heritable genotoxicity. *Mutat Res* **789**, 15-25, doi:10.1016/j.mrfmmm.2016.05.002 (2016).
- 203 GW Pharmaceuticals. *Package Leaflet: Information for the Patient Sativex Oromucosal spray*, <<http://www.medicines.org.uk/emc/PIL.23228.latest.pdf>> (2016).
- 204 Manikkam, M., Guerrero-Bosagna, C., Tracey, R., Haque, M. M. & Skinner, M. K. Transgenerational actions of environmental compounds on reproductive disease and identification of epigenetic biomarkers of ancestral exposures. *PLoS One* **7**, e31901, doi:10.1371/journal.pone.0031901 (2012).
- 205 Wang, J., Yuan, W. & Li, M. D. Genes and pathways co-associated with the exposure to multiple drugs of abuse, including alcohol, amphetamine/methamphetamine, cocaine, marijuana, morphine, and/or

- nicotine: a review of proteomics analyses. *Molecular neurobiology* **44**, 269-286, doi:10.1007/s12035-011-8202-4 (2011).
- 206 Zhuo, H. Q., Huang, L., Huang, H. Q. & Cai, Z. Effects of chronic tramadol exposure on the zebrafish brain: a proteomic study. *J Proteomics* **75**, 3351-3364, doi:10.1016/j.jprot.2012.03.038 (2012).
- 207 Tahir, S. K., Trogadis, J. E., Stevens, J. K. & Zimmerman, A. M. Cytoskeletal organization following cannabinoid treatment in undifferentiated and differentiated PC12 cells. *Biochem Cell Biol* **70**, 1159-1173 (1992).
- 208 Tahir, S. K. & Zimmerman, A. M. Influence of marijuana on cellular structures and biochemical activities. *Pharmacology, biochemistry, and behavior* **40**, 617-623 (1991).
- 209 Wilson, R. G., Jr., Tahir, S. K., Mechoulam, R., Zimmerman, S. & Zimmerman, A. M. Cannabinoid enantiomer action on the cytoarchitecture. *Cell Biol Int* **20**, 147-157 (1996).
- 210 Tortoriello, G. *et al.* Miswiring the brain: Delta9-tetrahydrocannabinol disrupts cortical development by inducing an SCG10/stathmin-2 degradation pathway. *EMBO J* **33**, 668-685, doi:10.1002/embj.201386035 (2014).
- 211 Hall, W. & Degenhardt, L. The adverse health effects of chronic cannabis use. *Drug Test Anal* **6**, 39-45, doi:10.1002/dta.1506 (2014).
- 212 Zimmerman, A. M. & Raj, A. Y. Influence of Cannabinoids on Somatic Cells in vivo. *Pharmacology* **21**, 277-287 (1980).
- 213 Zhang, C. Z. *et al.* Chromothripsis from DNA damage in micronuclei. *Nature* **522**, 179-184, doi:10.1038/nature14493 (2015).
- 214 Kloosterman, W. P. *et al.* Chromothripsis is a common mechanism driving genomic rearrangements in primary and metastatic colorectal cancer. *Genome Biol* **12**, R103, doi:10.1186/gb-2011-12-10-r103 (2011).
- 215 de Pagter, M. S. *et al.* Chromothripsis in healthy individuals affects multiple protein-coding genes and can result in severe congenital abnormalities in offspring. *Am J Hum Genet* **96**, 651-656, doi:10.1016/j.ajhg.2015.02.005 (2015).
- 216 Jenkins, K. J. *et al.* Noninherited risk factors and congenital cardiovascular defects: current knowledge: a scientific statement from the American Heart Association Council on Cardiovascular Disease in the Young: endorsed by the American Academy of Pediatrics. *Circulation* **115**, 2995-3014, doi:10.1161/CIRCULATIONAHA.106.183216 (2007).
- 217 Ewing, C. K., Loffredo, C. A. & Beaty, T. H. Paternal risk factors for isolated membranous ventricular septal defects. *Am J Med Genet* **71**, 42-46 (1997).
- 218 Wilson, P. D., Loffredo, C. A., Correa-Villasenor, A. & Ferencz, C. Attributable fraction for cardiac malformations. *Am J Epidemiol* **148**, 414-423 (1998).
- 219 David, A. L. *et al.* A case-control study of maternal periconceptual and pregnancy recreational drug use and fetal malformation using hair analysis. *PLoS One* **9**, e111038, doi:10.1371/journal.pone.0111038 (2014).
- 220 Draper, E. S. *et al.* Recreational drug use: a major risk factor for gastroschisis? *Am J Epidemiol* **167**, 485-491, doi:10.1093/aje/kwm335 (2008).
- 221 Forrester, M. B. & Merz, R. D. Risk of selected birth defects with prenatal illicit drug use, Hawaii, 1986-2002. *Journal of toxicology and environmental health* **70**, 7-18 (2007).
- 222 Torfs, C. P., Velie, E. M., Oechsli, F. W., Bateson, T. F. & Curry, C. J. A population-based study of gastroschisis: demographic, pregnancy, and lifestyle risk factors. *Teratology* **50**, 44-53, doi:10.1002/tera.1420500107 (1994).
- 223 van Gelder, M. M. *et al.* Maternal periconceptual illicit drug use and the risk of congenital malformations. *Epidemiology* **20**, 60-66, doi:10.1097/EDE.0b013e31818e5930 (2009).
- 224 Werler, M. M., Sheehan, J. E. & Mitchell, A. A. Association of vasoconstrictive exposures with risks of gastroschisis and small intestinal atresia. *Epidemiology* **14**, 349-354 (2003).
- 225 Leos-Toro C. *et al.* in *Cannabis in Canada: Patterns and Trends, 2017* Vol. 1 (eds PROPEL, Centre for Population Health Impact, & University of Waterloo) 1-23 (University of Waterloo, Waterloo, Ontario, 2017).
- 226 Nelson, J. S., Stebbins, R. C., Strassle, P. D. & Meyer, R. E. Geographic distribution of live births with tetralogy of Fallot in North Carolina 2003 to 2012. *Birth Defects Res A Clin Mol Teratol* **106**, 881-887, doi:10.1002/bdra.23566 (2016).
- 227 Centre, N. D. i. *North Carolina Drug Threat Assessment, April 2003: Marijuana*, <  
<https://www.justice.gov/archive/ndic/pubs3/3690/marijuan.htm>> (2003).

- 228 Root, E. D., Meyer, R. E. & Emch, M. E. Evidence of localized clustering of gastroschisis births in North Carolina, 1999-2004. *Social science & medicine (1982)* **68**, 1361-1367, doi:10.1016/j.socscimed.2009.01.034 (2009).
- 229 Young-Wolff, K. C. *et al.* Trends in Self-reported and Biochemically Tested Marijuana Use Among Pregnant Females in California From 2009-2016. *JAMA* **318**, 2490-2491, doi:10.1001/jama.2017.17225 (2017).
- 230 Prevention, C. f. D. C. a. *Key Findings: Gastroschisis Increased from 1995-2005*, <<http://www.cdc.gov/ncbddd/birthdefects/features/gastroschisis-key-findings.html>> (2014).
- 231 Florida High Intensity Drug Trafficking Area. Vol. 1 (ed Funded by the Office of Drug Control Policy from the White House) 1-50; [https://www.cannabisskunksense.co.uk/uploads/site-files/USA\\_Florida\\_2018-2003-2002\\_Florida\\_Medical\\_Marijuana\\_Impact\\_Report\\_data\\_\(2011\).pdf](https://www.cannabisskunksense.co.uk/uploads/site-files/USA_Florida_2018-2003-2002_Florida_Medical_Marijuana_Impact_Report_data_(2011).pdf) (Florida High Intensity Drug Trafficking Area, Florida, USA, 2018).
- 232 Mutrchinick O.M., Luna L., Aerteaga J. & Ryvemce Collaborative Group. Increasing at Birth Prevalence of Isolated Gastroschisis and Associated Risk Factors. *Birth Defects Research (Part A)* **91**, 354: P358 (2011).
- 233 Chabra, S., Gleason, C. A., Seidel, K. & Williams, M. A. Rising prevalence of gastroschisis in Washington State. *Journal of toxicology and environmental health* **74**, 336-345, doi:10.1080/15287394.2011.534424 (2011).
- 234 Bino, T., Chari-Bitron, A. & Shahar, A. Biochemical effects and morphological changes in rat liver mitochondria exposed to 1 -tetrahydrocannabinol. *Biochem Biophys Acta* **288**, 195-202 (1972).
- 235 Mahoney, J. M. & Harris, R. A. Effect of 9 -tetrahydrocannabinol on mitochondrial processes. *Biochemical pharmacology* **21**, 1217-1226 (1972).
- 236 Chari-Briton, A. Proceedings: Swelling of rat liver mitochondria induced by delta1-tetrahydrocannabinol. *Isr J Med Sci* **11**, 1189 (1975).
- 237 Chiu, P., Karler, R., Craven, C., Olsen, D. M. & Turkanis, S. A. The influence of delta9-tetrahydrocannabinol, cannabidiol and cannabidiol on tissue oxygen consumption. *Research communications in chemical pathology and pharmacology* **12**, 267-286 (1975).
- 238 Bartova, A. & Birmingham, M. K. Effect of delta9-tetrahydrocannabinol on mitochondrial NADH-oxidase activity. *J Biol Chem* **251**, 5002-5006 (1976).
- 239 Rossato, M., Ion Popa, F., Ferigo, M., Clari, G. & Foresta, C. Human sperm express cannabinoid receptor Cb1, the activation of which inhibits motility, acrosome reaction, and mitochondrial function. *The Journal of clinical endocrinology and metabolism* **90**, 984-991, doi:10.1210/jc.2004-1287 (2005).
- 240 Morimoto, S. *et al.* Identification and characterization of cannabinoids that induce cell death through mitochondrial permeability transition in Cannabis leaf cells. *J Biol Chem* **282**, 20739-20751, doi:10.1074/jbc.M700133200 (2007).
- 241 Shrivastava, A., Kuzontkoski, P. M., Groopman, J. E. & Prasad, A. Cannabidiol induces programmed cell death in breast cancer cells by coordinating the cross-talk between apoptosis and autophagy. *Mol Cancer Ther* **10**, 1161-1172, doi:10.1158/1535-7163.MCT-10-1100 (2011).
- 242 Benard, G. *et al.* Mitochondrial CB(1) receptors regulate neuronal energy metabolism. *Nat Neurosci* **15**, 558-564, doi:10.1038/nn.3053 (2012).
- 243 Zaccagnino, P. *et al.* The endocannabinoid 2-arachidonoylglycerol decreases calcium induced cytochrome c release from liver mitochondria. *J Bioenerg Biomembr* **44**, 273-280, doi:10.1007/s10863-012-9431-6 (2012).
- 244 Fisar, Z., Singh, N. & Hroudova, J. Cannabinoid-induced changes in respiration of brain mitochondria. *Toxicology letters* **231**, 62-71, doi:10.1016/j.toxlet.2014.09.002 (2014).
- 245 Hebert-Chatelain, E. *et al.* Cannabinoid control of brain bioenergetics: Exploring the subcellular localization of the CB1 receptor. *Mol Metab* **3**, 495-504, doi:10.1016/j.molmet.2014.03.007 (2014).
- 246 Laprairie, R. B., Bagher, A. M., Kelly, M. E., Dupre, D. J. & Denovan-Wright, E. M. Type 1 cannabinoid receptor ligands display functional selectivity in a cell culture model of striatal medium spiny projection neurons. *J Biol Chem* **289**, 24845-24862, doi:10.1074/jbc.M114.557025 (2014).
- 247 Wolff, V. *et al.* Tetrahydrocannabinol induces brain mitochondrial respiratory chain dysfunction and increases oxidative stress: a potential mechanism involved in cannabis-related stroke. *Biomed Res Int* **2015**, 323706, doi:10.1155/2015/323706 (2015).
- 248 Hebert-Chatelain, E. *et al.* A cannabinoid link between mitochondria and memory. *Nature* **539**, 555-559, doi:10.1038/nature20127 (2016).
- 249 Young-Wolff, K. C., Tucker, L., Alexeeff, S. & *et al.* Trends in self-reported and biochemically tested marijuana use among pregnant females in California from 2009-2016. *JAMA* **318**, 2490-2491, doi:10.1001/jama.2017.17225 (2017).

- 250 Gage, F. H., Guarente, L. P. & Wagers, A. J. Aging and Rejuvenation: Insights from Rusty Gage, Leonard Guarente, and Amy Wagers. *Trends Mol Med* **22**, 633-634, doi:10.1016/j.molmed.2016.06.011 (2016).
- 251 Guarente, L. Linking DNA damage, NAD(+)/SIRT1, and aging. *Cell Metab* **20**, 706-707, doi:10.1016/j.cmet.2014.10.015 (2014).
- 252 Satoh, A., Imai, S. I. & Guarente, L. The brain, sirtuins, and ageing. *Nat Rev Neurosci* **18**, 362-374, doi:10.1038/nrn.2017.42 (2017).
- 253 Zhang, H. *et al.* NAD(+) repletion improves mitochondrial and stem cell function and enhances life span in mice. *Science* **352**, 1436-1443, doi:10.1126/science.aaf2693 (2016).
- 254 Gomes, A. P. *et al.* Declining NAD(+) induces a pseudohypoxic state disrupting nuclear-mitochondrial communication during aging. *Cell* **155**, 1624-1638, doi:10.1016/j.cell.2013.11.037 (2013).
- 255 Canto, C., Menzies, K. J. & Auwerx, J. NAD(+) Metabolism and the Control of Energy Homeostasis: A Balancing Act between Mitochondria and the Nucleus. *Cell Metab* **22**, 31-53, doi:10.1016/j.cmet.2015.05.023 (2015).
- 256 Aksoy, P., White, T. A., Thompson, M. & Chini, E. N. Regulation of intracellular levels of NAD: a novel role for CD38. *Biochem Biophys Res Commun* **345**, 1386-1392, doi:10.1016/j.bbrc.2006.05.042 (2006).
- 257 Braidy, N. *et al.* Age related changes in NAD+ metabolism oxidative stress and Sirt1 activity in wistar rats. *PLoS One* **6**, e19194, doi:10.1371/journal.pone.0019194 (2011).
- 258 Camacho-Pereira, J. *et al.* CD38 Dictates Age-Related NAD Decline and Mitochondrial Dysfunction through an SIRT3-Dependent Mechanism. *Cell Metab* **23**, 1127-1139, doi:10.1016/j.cmet.2016.05.006 (2016).
- 259 Canto, C. *et al.* The NAD(+) precursor nicotinamide riboside enhances oxidative metabolism and protects against high-fat diet-induced obesity. *Cell Metab* **15**, 838-847, doi:10.1016/j.cmet.2012.04.022 (2012).
- 260 Chini, C. C. S., Tarrago, M. G. & Chini, E. N. NAD and the aging process: Role in life, death and everything in between. *Molecular and cellular endocrinology* **455**, 62-74, doi:10.1016/j.mce.2016.11.003 (2017).
- 261 Chini, E. N. CD38 as a regulator of cellular NAD: a novel potential pharmacological target for metabolic conditions. *Curr Pharm Des* **15**, 57-63 (2009).
- 262 Christian, B. E. & Shadel, G. S. Aging: it's SIRTainly possible to restore mitochondrial dysfunction. *Curr Biol* **24**, R206-208, doi:10.1016/j.cub.2014.01.027 (2014).
- 263 Imai, S. & Guarente, L. NAD+ and sirtuins in aging and disease. *Trends Cell Biol* **24**, 464-471, doi:10.1016/j.tcb.2014.04.002 (2014).
- 264 Massudi, H. *et al.* Age-associated changes in oxidative stress and NAD+ metabolism in human tissue. *PLoS One* **7**, e42357, doi:10.1371/journal.pone.0042357 (2012).
- 265 Matalonga, J. *et al.* The Nuclear Receptor LXR Limits Bacterial Infection of Host Macrophages through a Mechanism that Impacts Cellular NAD Metabolism. *Cell Rep* **18**, 1241-1255, doi:10.1016/j.celrep.2017.01.007 (2017).
- 266 Schultz, M. B. & Sinclair, D. A. Why NAD(+) Declines during Aging: It's Destroyed. *Cell Metab* **23**, 965-966, doi:10.1016/j.cmet.2016.05.022 (2016).
- 267 Son, M. J. *et al.* Upregulation of mitochondrial NAD(+) levels impairs the clonogenicity of SSEA1(+) glioblastoma tumor-initiating cells. *Exp Mol Med* **49**, e344, doi:10.1038/emmm.2017.74 (2017).
- 268 Verdin, E. NAD(+) in aging, metabolism, and neurodegeneration. *Science* **350**, 1208-1213, doi:10.1126/science.aac4854 (2015).
- 269 Alger, B. E. & Tang, A. H. Do cannabinoids reduce brain power? *Nat Neurosci* **15**, 499-501, doi:10.1038/nn.3072 (2012).
- 270 Brown, K. D. *et al.* Activation of SIRT3 by the NAD(+) precursor nicotinamide riboside protects from noise-induced hearing loss. *Cell Metab* **20**, 1059-1068, doi:10.1016/j.cmet.2014.11.003 (2014).
- 271 Cha, Y. *et al.* Metabolic control of primed human pluripotent stem cell fate and function by the miR-200c-SIRT2 axis. *Nat Cell Biol* **19**, 445-456, doi:10.1038/ncb3517 (2017).
- 272 Chalkiadaki, A. & Guarente, L. The multifaceted functions of sirtuins in cancer. *Nat Rev Cancer* **15**, 608-624, doi:10.1038/nrc3985 (2015).
- 273 Chen, H. *et al.* DEPTOR Suppresses Lipogenesis and Ameliorates Hepatic Steatosis and Acute-on-Chronic Liver Injury in Alcoholic Liver Disease. *Hepatology*, doi:10.1002/hep.29849 (2018).
- 274 Dellinger, R. W. *et al.* Repeat dose NRPT (nicotinamide riboside and pterostilbene) increases NAD(+) levels in humans safely and sustainably: a randomized, double-blind, placebo-controlled study. *NPJ Aging Mech Dis* **3**, 17, doi:10.1038/s41514-017-0016-9 (2017).

- 275 Elhassan, Y. S., Philp, A. A. & Lavery, G. G. Targeting NAD<sup>+</sup> in Metabolic Disease: New Insights Into an Old Molecule. *Journal of the Endocrine Society* **1**, 816-835, doi:10.1210/js.2017-00092 (2017).
- 276 Guarente, L. Overcoming ATM Deficiency by Activating the NAD(+)/SIRT1 Axis. *Cell Metab* **24**, 526-528, doi:10.1016/j.cmet.2016.09.019 (2016).
- 277 Guarente, L. CELL METABOLISM. The resurgence of NAD(+). *Science* **352**, 1396-1397, doi:10.1126/science.aag1718 (2016).
- 278 Igarashi, M. & Guarente, L. mTORC1 and SIRT1 Cooperate to Foster Expansion of Gut Adult Stem Cells during Calorie Restriction. *Cell* **166**, 436-450, doi:10.1016/j.cell.2016.05.044 (2016).
- 279 Igarashi, M. & Guarente, L. The unexpected role of mTORC1 in intestinal stem cells during calorie restriction. *Cell Cycle* **16**, 1-2, doi:10.1080/15384101.2016.1221210 (2017).
- 280 Imai, S. I. & Guarente, L. It takes two to tango: NAD(+) and sirtuins in aging/longevity control. *NPJ Aging Mech Dis* **2**, 16017, doi:10.1038/npjamd.2016.17 (2016).
- 281 Ma, Z. *et al.* Resveratrol improves alcoholic fatty liver disease by downregulating HIF-1alpha expression and mitochondrial ROS production. *PLoS One* **12**, e0183426, doi:10.1371/journal.pone.0183426 (2017).
- 282 Mohrin, M. *et al.* Stem cell aging. A mitochondrial UPR-mediated metabolic checkpoint regulates hematopoietic stem cell aging. *Science* **347**, 1374-1377, doi:10.1126/science.aaa2361 (2015).
- 283 Mohs, M. E., Watson, R. R. & Leonard-Green, T. Nutritional effects of marijuana, heroin, cocaine, and nicotine. *J Am Diet Assoc* **90**, 1261-1267 (1990).
- 284 Ondracek, C. R., Frappier, V., Ringel, A. E., Wolberger, C. & Guarente, L. Mutations that Allow SIR2 Orthologs to Function in a NAD(+)-Depleted Environment. *Cell Rep* **18**, 2310-2319, doi:10.1016/j.celrep.2017.02.031 (2017).
- 285 Raval, A. P., Borges-Garcia, R., Diaz, F., Sick, T. J. & Bramlett, H. Oral contraceptives and nicotine synergistically exacerbate cerebral ischemic injury in the female brain. *Transl Stroke Res* **4**, 402-412, doi:10.1007/s12975-013-0253-6 (2013).
- 286 Sifferlin A. You Asked: Is an Anti-Aging Pill on the Horizon? *Time Magazine - Australian Edition, 26th February 2018*, 64 (2018).
- 287 Wakley, A. A. & Craft, R. M. THC-methadone and THC-naltrexone interactions on discrimination, antinociception, and locomotion in rats. *Behavioural pharmacology* **22**, 489-497, doi:10.1097/FBP.0b013e328348ed22 (2011).
- 288 Wellman, A. S. *et al.* Intestinal Epithelial Sirtuin 1 Regulates Intestinal Inflammation During Aging in Mice by Altering the Intestinal Microbiota. *Gastroenterology* **153**, 772-786, doi:10.1053/j.gastro.2017.05.022 (2017).
- 289 Williams, E. O. *et al.* Sirtuin 1 Promotes Deacetylation of Oct4 and Maintenance of Naive Pluripotency. *Cell Rep* **17**, 809-820, doi:10.1016/j.celrep.2016.09.046 (2016).
- 290 Bab, I., Ofek, O., Tam, J., Rehnelt, J. & Zimmer, A. Endocannabinoids and the regulation of bone metabolism. *Journal of neuroendocrinology* **20 Suppl 1**, 69-74, doi:JNE1675 [pii] 10.1111/j.1365-2826.2008.01675.x (2008).
- 291 Bab, I. & Zimmer, A. Cannabinoid receptors and the regulation of bone mass. *Br J Pharmacol* **153**, 182-188, doi:0707593 [pii] 10.1038/sj.bjp.0707593 (2008).
- 292 Bab, I. A. Regulation of skeletal remodeling by the endocannabinoid system. *Ann N Y Acad Sci* **1116**, 414-422, doi:annals.1402.014 [pii] 10.1196/annals.1402.014 (2007).
- 293 Idris, A. I., Sophocleous, A., Landao-Bassonga, E., van't Hof, R. J. & Ralston, S. H. Regulation of bone mass, osteoclast function, and ovariectomy-induced bone loss by the type 2 cannabinoid receptor. *Endocrinology* **149**, 5619-5626, doi:en.2008-0150 [pii] 10.1210/en.2008-0150 (2008).
- 294 Johnson, D. R., Stebulis, J. A., Rossetti, R. G., Burstein, S. H. & Zurier, R. B. Suppression of fibroblast metalloproteinases by ajulemic acid, a nonpsychoactive cannabinoid acid. *J Cell Biochem* **100**, 184-190, doi:10.1002/jcb.21046 (2007).
- 295 Lunn, C. A. *et al.* Biology and therapeutic potential of cannabinoid CB2 receptor inverse agonists. *Br J Pharmacol* **153**, 226-239, doi:0707480 [pii] 10.1038/sj.bjp.0707480 (2008).
- 296 Ofek, O. *et al.* Peripheral cannabinoid receptor, CB2, regulates bone mass. *Proc Natl Acad Sci U S A* **103**, 696-701, doi:0504187103 [pii] 10.1073/pnas.0504187103 (2006).



- 297 Patinkin, D., Milman, G., Breuer, A., Fride, E. & Mechoulam, R. Endocannabinoids as positive or negative factors in hematopoietic cell migration and differentiation. *European journal of pharmacology* **595**, 1-6, doi:S0014-2999(08)00510-4 [pii] 10.1016/j.ejphar.2008.05.002 (2008).
- 298 Rossi, F. *et al.* The endovanilloid/endocannabinoid system in human osteoclasts: Possible involvement in bone formation and resorption. *Bone* **44**, 476-484, doi:S8756-3282(08)00866-1 [pii] 10.1016/j.bone.2008.10.056 (2008).
- 299 Tam, J. *et al.* Involvement of neuronal cannabinoid receptor CB1 in regulation of bone mass and bone remodeling. *Mol Pharmacol* **70**, 786-792 (2006).
- 300 Tam, J. *et al.* The cannabinoid CB1 receptor regulates bone formation by modulating adrenergic signaling. *FASEB J* **22**, 285-294, doi:fj.06-7957com [pii] 10.1096/fj.06-7957com (2008).
- 301 Jovaisaite, V., Mouchiroud, L. & Auwerx, J. The mitochondrial unfolded protein response, a conserved stress response pathway with implications in health and disease. *J Exp Biol* **217**, 137-143, doi:10.1242/jeb.090738 (2014).
- 302 Esposito, G. *et al.* Cannabidiol reduces Abeta-induced neuroinflammation and promotes hippocampal neurogenesis through PPARgamma involvement. *PLoS One* **6**, e28668, doi:10.1371/journal.pone.0028668 (2011).
- 303 Hegde, V. L., Singh, U. P., Nagarkatti, P. S. & Nagarkatti, M. Critical Role of Mast Cells and Peroxisome Proliferator-Activated Receptor gamma in the Induction of Myeloid-Derived Suppressor Cells by Marijuana Cannabidiol In Vivo. *J Immunol* **194**, 5211-5222, doi:10.4049/jimmunol.1401844 (2015).
- 304 Hind, W. H., England, T. J. & O'Sullivan, S. E. Cannabidiol protects an in vitro model of the blood-brain barrier from oxygen-glucose deprivation via PPARgamma and 5-HT1A receptors. *Br J Pharmacol* **173**, 815-825, doi:10.1111/bph.13368 (2016).
- 305 O'Sullivan, S. E. & Kendall, D. A. Cannabinoid activation of peroxisome proliferator-activated receptors: potential for modulation of inflammatory disease. *Immunobiology* **215**, 611-616, doi:10.1016/j.imbio.2009.09.007 (2010).
- 306 O'Sullivan, S. E., Sun, Y., Bennett, A. J., Randall, M. D. & Kendall, D. A. Time-dependent vascular actions of cannabidiol in the rat aorta. *European journal of pharmacology* **612**, 61-68, doi:10.1016/j.ejphar.2009.03.010 (2009).
- 307 Ramer, R. *et al.* COX-2 and PPAR-gamma confer cannabidiol-induced apoptosis of human lung cancer cells. *Mol Cancer Ther* **12**, 69-82, doi:10.1158/1535-7163.MCT-12-0335 (2013).
- 308 Scuderi, C., Steardo, L. & Esposito, G. Cannabidiol promotes amyloid precursor protein ubiquitination and reduction of beta amyloid expression in SHSY5YAPP+ cells through PPARgamma involvement. *Phytother Res* **28**, 1007-1013, doi:10.1002/ptr.5095 (2014).
- 309 Adaikalakoteswari, A. *et al.* Low Vitamin B12 in Pregnancy Is Associated With Adipose-Derived Circulating miRs Targeting PPARgamma and Insulin Resistance. *The Journal of clinical endocrinology and metabolism* **102**, 4200-4209, doi:10.1210/jc.2017-01155 (2017).
- 310 Anghebem-Oliveira, M. I. *et al.* Type 2 diabetes-associated genetic variants of FTO, LEPR, PPARg, and TCF7L2 in gestational diabetes in a Brazilian population. *Arch Endocrinol Metab* **61**, 238-248, doi:10.1590/2359-3997000000258 (2017).
- 311 Casamadrid, V., Amaya, C. A. & Mendieta, Z. H. Body Mass Index in Pregnancy Does Not Affect Peroxisome Proliferator-activated Receptor Gamma Promoter Region (-359 to -260) Methylation in the Neonate. *Ann Med Health Sci Res* **6**, 38-43, doi:10.4103/2141-9248.180272 (2016).
- 312 Cawyer, C. *et al.* Attenuation of hyperglycemia-induced apoptotic signaling and anti-angiogenic milieu in cultured cytotrophoblast cells. *Hypertens Pregnancy* **35**, 159-169, doi:10.3109/10641955.2015.1122035 (2016).
- 313 Drew, P. D. & Kane, C. J. Peroxisome Proliferator-Activated Receptor-gamma Agonists: Potential Therapeutics for Neuropathology Associated with Fetal Alcohol Spectrum Disorders. *J Clin Cell Immunol* **7**, doi:10.4172/2155-9899.1000469 (2016).
- 314 Gao, F., Hu, W., Li, Y., Shen, H. & Hu, J. Mono-2-ethylhexyl phthalate inhibits human extravillous trophoblast invasion via the PPARgamma pathway. *Toxicology and applied pharmacology* **327**, 23-29, doi:10.1016/j.taap.2017.04.014 (2017).
- 315 Hasby Saad, M., El-Anwar, N., Lotfy, S., Fouda, M. & Hasby, E. Human placental PPAR-gamma & SOX2 expression in serologically proved toxoplasmosis. *Parasite Immunol*, e12529, doi:10.1111/pim.12529 (2018).

- 316 Hu, W. *et al.* Activation of Peroxisome Proliferator-Activated Receptor Gamma and Disruption of Progesterone Synthesis of 2-Ethylhexyl Diphenyl Phosphate in Human Placental Choriocarcinoma Cells: Comparison with Triphenyl Phosphate. *Environ Sci Technol* **51**, 4061-4068, doi:10.1021/acs.est.7b00872 (2017).
- 317 Kurzynska, A., Chojnowska, K., Bogacki, M. & Bogacka, I. PPAR ligand association with prostaglandin F2alpha and E2 synthesis in the pig corpus luteum-An in vitro study. *Anim Reprod Sci* **172**, 157-163, doi:10.1016/j.anireprosci.2016.07.014 (2016).
- 318 Lecoutre, S. *et al.* Depot- and sex-specific effects of maternal obesity in offspring's adipose tissue. *The Journal of endocrinology* **230**, 39-53, doi:10.1530/JOE-16-0037 (2016).
- 319 Lendvai, A., Deutsch, M. J., Plosch, T. & Ensenauer, R. The peroxisome proliferator-activated receptors under epigenetic control in placental metabolism and fetal development. *Am J Physiol Endocrinol Metab* **310**, E797-810, doi:10.1152/ajpendo.00372.2015 (2016).
- 320 Lin, Y., Bircsak, K. M., Gorczyca, L., Wen, X. & Aleksunes, L. M. Regulation of the placental BCRP transporter by PPAR gamma. *J Biochem Mol Toxicol* **31**, doi:10.1002/jbt.21880 (2017).
- 321 Maekawa, M. *et al.* Polyunsaturated fatty acid deficiency during neurodevelopment in mice models the prodromal state of schizophrenia through epigenetic changes in nuclear receptor genes. *Transl Psychiatry* **7**, e1229, doi:10.1038/tp.2017.182 (2017).
- 322 Mahendra, J. *et al.* Evidence Linking the Role of Placental Expressions of Peroxisome Proliferator-Activated Receptor-gamma and Nuclear Factor-Kappa B in the Pathogenesis of Preeclampsia Associated With Periodontitis. *J Periodontol* **87**, 962-970, doi:10.1902/jop.2016.150677 (2016).
- 323 Marginean, C. *et al.* The role of TGF-beta1 869 T > C and PPAR gamma2 34 C > G polymorphisms, fat mass, and anthropometric characteristics in predicting childhood obesity at birth: A cross-sectional study according the parental characteristics and newborn's risk for child obesity (the newborns obesity's risk) NOR study. *Medicine (Baltimore)* **95**, e4265, doi:10.1097/MD.0000000000004265 (2016).
- 324 Meher, A. P. *et al.* Placental DHA and mRNA levels of PPARgamma and LXRalpha and their relationship to birth weight. *J Clin Lipidol* **10**, 767-774, doi:10.1016/j.jacl.2016.02.004 (2016).
- 325 Papamitsou, T., Toskas, A., Papadopoulou, K., Economou, Z. & Sioga, A. Expression of peroxisome proliferator activation receptors (PPARs) and TNFalpha in placenta tissues in unexplained recurrent pregnancy loss: an immunohistochemical study. *Histology and histopathology* **31**, 1029-1036, doi:10.14670/HH-11-734 (2016).
- 326 Roberti, S. L. *et al.* Critical role of mTOR, PPARgamma and PPARdelta signaling in regulating early pregnancy decidual function, embryo viability and fetoplacental growth. *Molecular human reproduction*, doi:10.1093/molehr/gay013 (2018).
- 327 Shapiro, A. L. *et al.* Nicotinamide Promotes Adipogenesis in Umbilical Cord-Derived Mesenchymal Stem Cells and Is Associated with Neonatal Adiposity: The Healthy Start BabyBUMP Project. *PLoS One* **11**, e0159575, doi:10.1371/journal.pone.0159575 (2016).
- 328 Singh, S. P. *et al.* Gestational Exposure to Sidestream (Secondhand) Cigarette Smoke Promotes Transgenerational Epigenetic Transmission of Exacerbated Allergic Asthma and Bronchopulmonary Dysplasia. *J Immunol* **198**, 3815-3822, doi:10.4049/jimmunol.1700014 (2017).
- 329 Sonanez-Organis, J. G. *et al.* HIF-1alpha and PPARgamma during physiological cardiac hypertrophy induced by pregnancy: Transcriptional activities and effects on target genes. *Gene* **591**, 376-381, doi:10.1016/j.gene.2016.06.025 (2016).
- 330 Wang, L. L., Yu, Y., Guan, H. B. & Qiao, C. Effect of Human Umbilical Cord Mesenchymal Stem Cell Transplantation in a Rat Model of Preeclampsia. *Reprod Sci* **23**, 1058-1070, doi:10.1177/1933719116630417 (2016).
- 331 Wu, Y., Ruan, Y., Shen, L. & Gong, Q. Protective effects of PPAR-gamma against pregnancy-induced hypertension by differential ETR expression in rat models. *J Cell Biochem* **119**, 3118-3128, doi:10.1002/jcb.26454 (2018).
- 332 Xu, Y. *et al.* An M1-like Macrophage Polarization in Decidual Tissue during Spontaneous Preterm Labor That Is Attenuated by Rosiglitazone Treatment. *J Immunol* **196**, 2476-2491, doi:10.4049/jimmunol.1502055 (2016).
- 333 Tomar R.S. *et al.* Evidence on the Carcinogenicity of Marijuana Smoke. *California Health Department* **1**, 1-150 (August 2009).
- 334 Maor, Y. *et al.* Cannabidiol inhibits growth and induces programmed cell death in kaposi sarcoma-associated herpesvirus-infected endothelium. *Genes Cancer* **3**, 512-520, doi:10.1177/1947601912466556 (2012).



- 335 Pucci, M. *et al.* Epigenetic control of skin differentiation genes by phytocannabinoids. *Br J Pharmacol* **170**, 581-591, doi:10.1111/bph.12309 (2013).
- 336 Karmaus, P. W., Wagner, J. G., Harkema, J. R., Kaminski, N. E. & Kaplan, B. L. Cannabidiol (CBD) enhances lipopolysaccharide (LPS)-induced pulmonary inflammation in C57BL/6 mice. *J Immunotoxicol* **10**, 321-328, doi:10.3109/1547691X.2012.741628 (2013).
- 337 Graham, J. D. P. in *Cannabis and Health* Vol. 1 (ed J.D.P. Graham) Ch. 8, 271-320 (Academic Press, 1976).
- 338 Rocky Mountain High Drug Trafficking Area. The Legalization of Marijuana in Colorado: The Impact. **1**, 1-168 (October 2017).
- 339 Oregon State Police. Vol. 1 *1* (ed Police Department) 1-32, Slide 29 (Oregon Police Department, Oregon, 2009).
- 340 Oregon - Idaho High Intensity Drug Trafficking Area Program. Vol. 1 (ed Oregon - Idaho High Intensity Drug Trafficking Area Program) 1-75 (Oregon - Idaho High Intensity Drug Trafficking Area Program, Oregon, 2018).
- 341 Mills D. & The Communications Institute. Cultivating Disaster: the Effect of Cannabis Cultivation on the Environment of Calaveras County. **1**, 1-61 (2017).
- 342 Posada Pueblo. Posada - Bringing Pueblo Home. **1**, 1-35 (2016).
- 343 McCance-Katz E.F. in *SAMSHA's 14th Annual Prevention Day* (ed Health and Human Services) (US Department of Health and Human Services, Washington DC, 2018).
- 344 Rehman, W., Arfons, L. M. & Lazarus, H. M. The rise, fall and subsequent triumph of thalidomide: lessons learned in drug development. *Ther Adv Hematol* **2**, 291-308, doi:10.1177/2040620711413165 (2011).
- 345 Geber, W. F. & Schramm, L. C. Effect of marihuana extract on fetal hamsters and rabbits. *Toxicology and applied pharmacology* **14**, 276-282 (1969).
- 346 Geber, W. F. & Schramm, L. C. Teratogenicity of marihuana extract as influenced by plant origin and seasonal variation. *Arch Int Pharmacodyn Ther* **177**, 224-230 (1969).
- 347 Brookings Institute. *Brookings Debate: Should the federal government remove marijuana from its list of Schedule I drugs?*, <<https://www.brookings.edu/events/brookings-debate-should-the-federal-government-remove-marijuana-from-its-list-of-schedule-i-drugs/>> (2016).

## **Figure Captions**

Figure 1: Cannabis Use Rates in Pregnancy in California and Gastroschisis Rates USA, by Age Groups

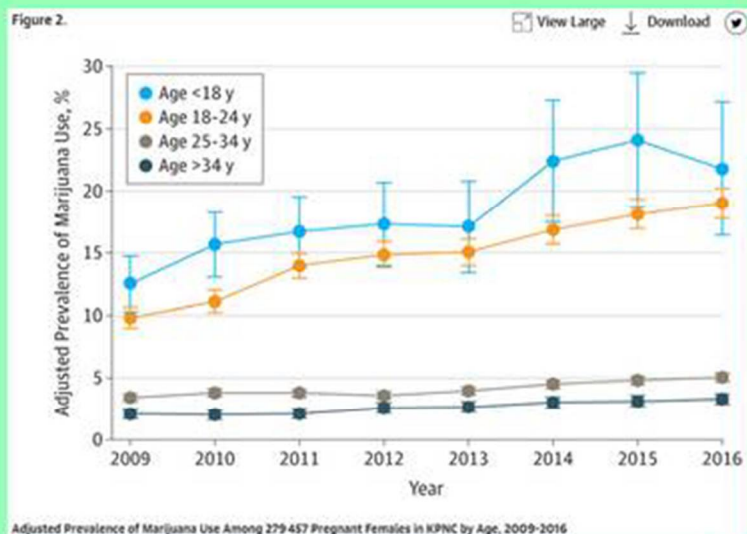
Figure 2: Close Parallel between the Collapse of Mitochondrial NAD<sup>+</sup> Dependent Respiration in Complexes I, II and IV and the Decline of NAD<sup>+</sup> with Physiological Aging.

Figure 3: Sperm swimming demonstrating how mitochondria are wrapped around the central axel of the flagellum to provide local energy where it is needed.

Figure 4: Mitochondria (green) surrounding the mitotic spindle (made of microtubuiles shown in pink) which carry the chromsomes (blue) at the time of cell division. Photo taken from NIH laboratories (<http://https://visualsonline.cancer.gov/details.cfm?imageid=10708>).

Figure 5: Presentation of Dr Frances Kelsey of FDA to President John F Kennedy.

## Cannabis Use in Pregnancy, California & Gastroschisis Rates, USA by Age Groups



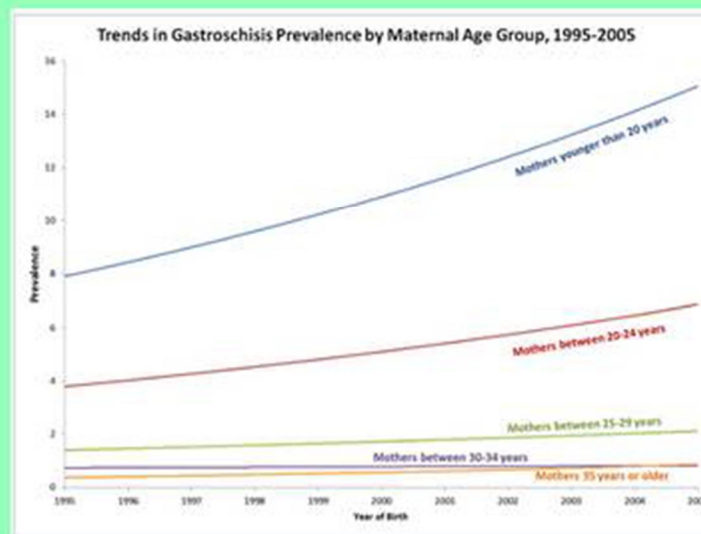
December 26, 2017

### Trends in Self-reported and Biochemically Tested Marijuana Use Among Pregnant Females in California From 2009-2016

Kelly C. Young-Wolff, PhD, MPH<sup>1</sup>; Lue-Yen Tucker, BA<sup>1</sup>; Stacey Alexeeff, PhD<sup>2</sup>; Mary Anne Armstrong, MA<sup>1</sup>; Amy Conway, MPH<sup>2</sup>; Constance Weisner, DrPH<sup>3</sup>; Nancy Goler, MD<sup>4</sup>

> Author Affiliations | Article Information

JAMA. 2017;318(24):2490-2491. doi:10.1001/jama.2017.17225



**CDC** Centers for Disease Control and Prevention  
CDC 24/7: Saving Lives. Protecting People™

<http://www.cdc.gov/ncbddd/birthdefects/features/gastroschisis-key-findings.html>

## Decline in NAD<sup>+</sup> from Cannabinoids Mimics those Occurring with Age

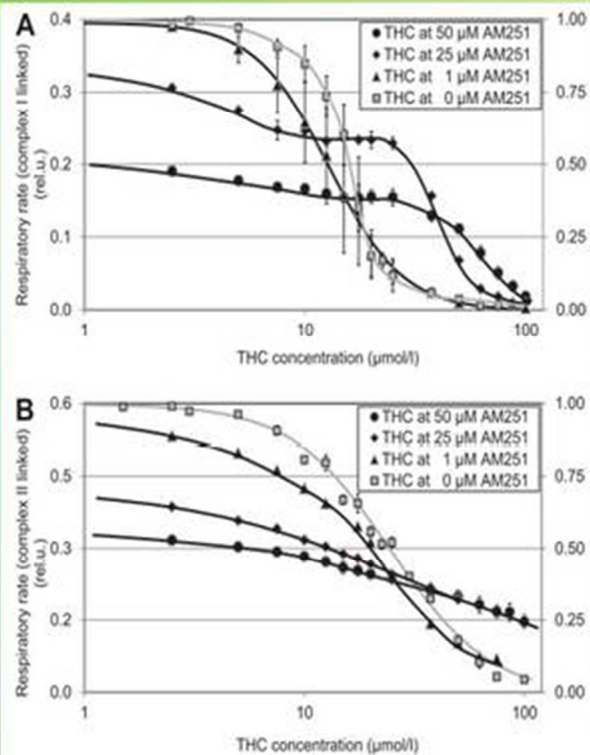


Fig. 3. THC-induced inhibition of the respiratory rate in pig brain mitochondria incubated in substrates of electron supply through (A) complex I or (B) complex II.

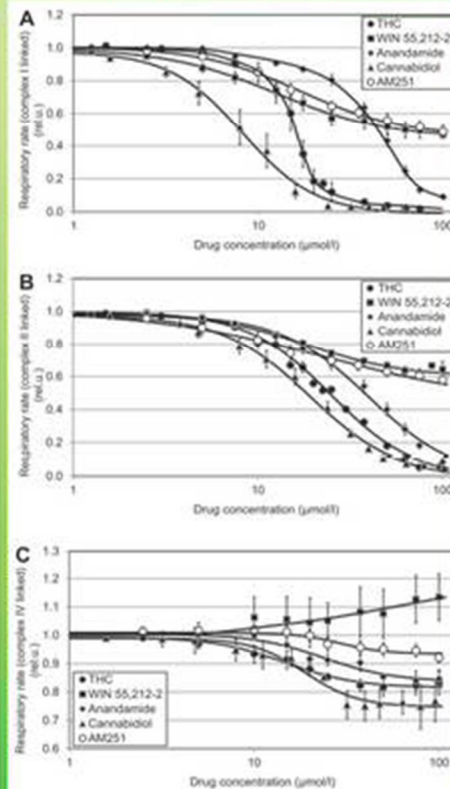


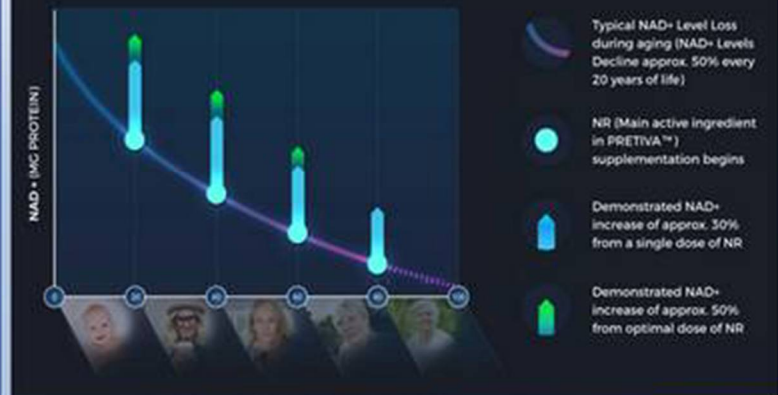
Fig. 2. Cannabinoid-induced inhibition of the respiratory rate in pig brain mitochondria incubated in substrates of electron supply through (A) complex I, (B) complex II, and (C) complex IV. Dose-response curves are displayed as plots of

Toxicol Lett. 2014 Nov 18;231(1):62-71. doi: 10.1016/j.toxlet.2014.09.002. Epub 2014 Sep 6.

### Cannabinoid-induced changes in respiration of brain mitochondria.

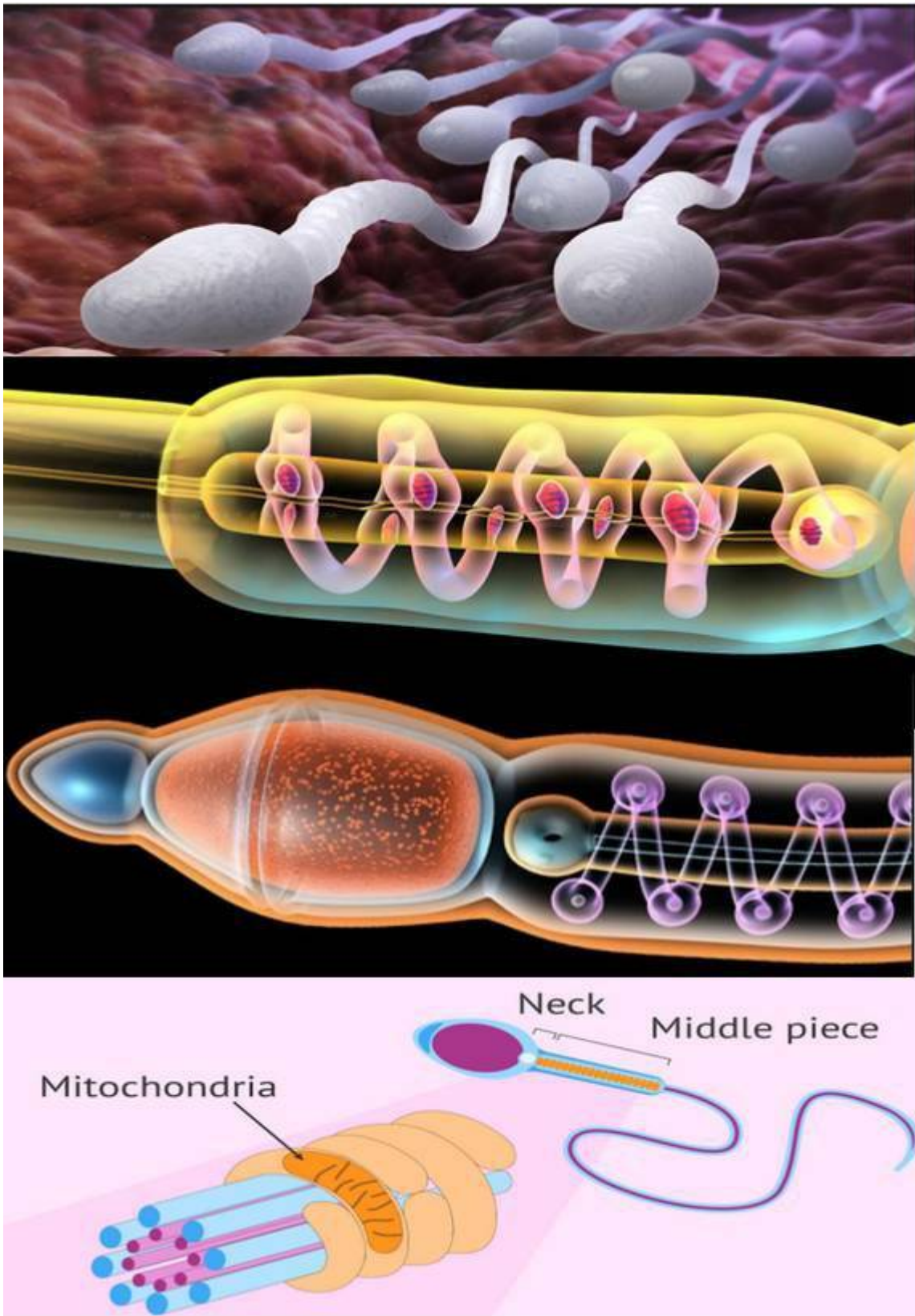
Fišar Z<sup>1</sup>, Singh N<sup>2</sup>, Hroudová J<sup>3</sup>.

## Every 20 Years, NAD<sup>+</sup> Levels Drop By 50%

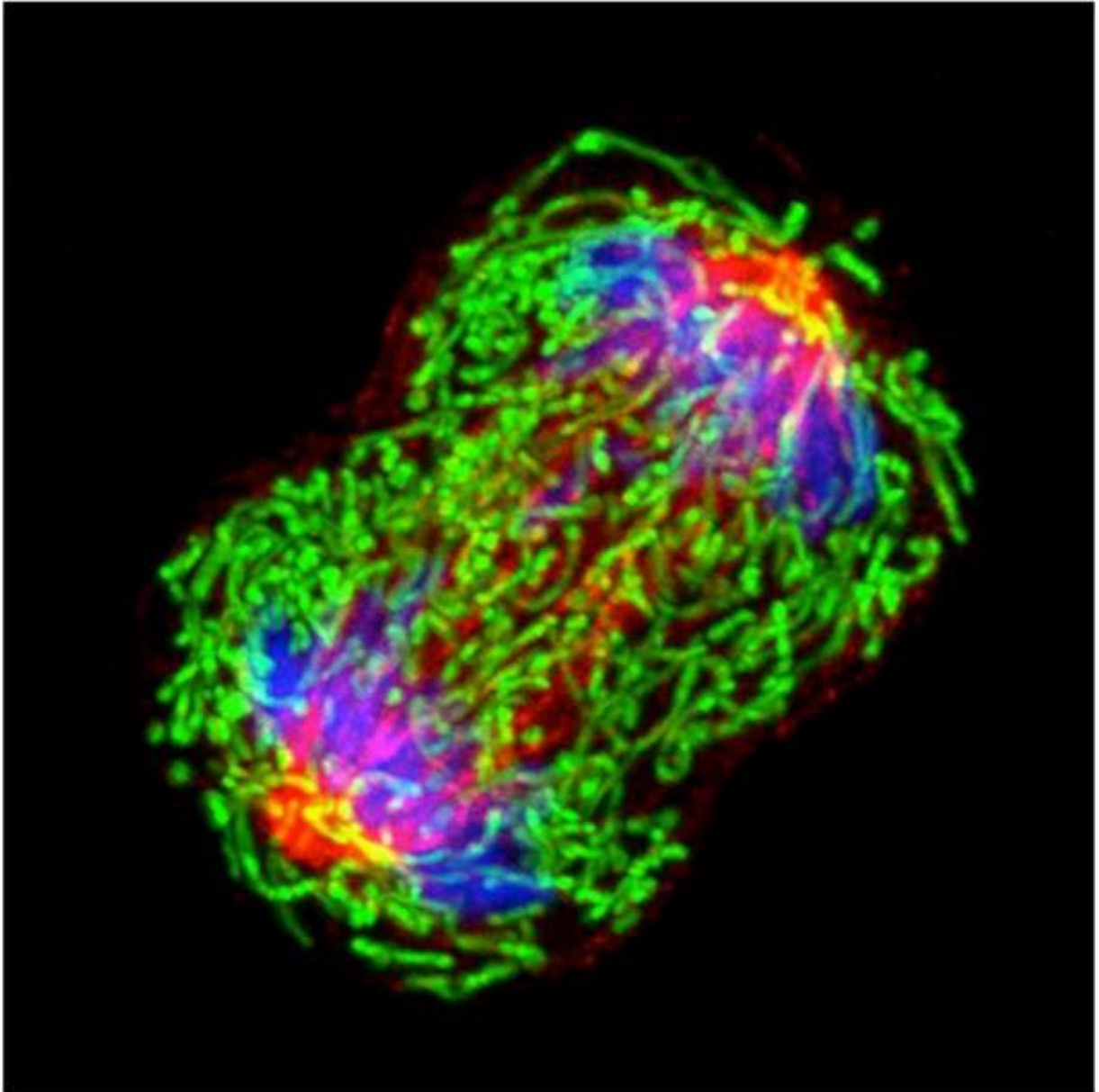


<http://dailytrendsetter.com/health/pretiva-a-pill-to-slow-the-aging-process-would-you-take-it/>





## Cell Dividing



<http://visualsonline.cancer.gov/details.cfm?imageid=10708>

## *Dr Frances Kelsey* @ FDA Saved USA from Thalidomide



**Figure 2.** Dr Frances Kelsey is awarded the President's Award for Distinguished Federal Civilian Service from President John F. Kennedy in 1962.

*Therapeutic Advances in Hematology* *Review*

---

**The rise, fall and subsequent triumph of thalidomide: lessons learned in drug development**

Waqas Rehman, Lisa M. Arfons and Hillard M. Lazarus

Ther Adv Hematol  
2011; 2(4): 291-308  
DOI: 10.1177/2042071111410168  
© The Author(s), 2011.  
Reprints and permissions:  
http://www.sagepub.com/journalsPermissions.nav